




# Food and temperature stressors have opposing effects in determining flexible migration decisions in brown trout (*Salmo trutta*)

Louise C. Archer<sup>1,2</sup>  | Stephen A. Hutton<sup>1,2</sup> | Luke Harman<sup>1,2</sup> | Stephen D. McCormick<sup>3</sup> | Michael N. O'Grady<sup>4</sup> | Joseph P. Kerry<sup>4</sup> | W. Russell Poole<sup>5</sup> | Patrick Gargan<sup>6</sup> | Philip McGinnity<sup>1,5</sup> | Thomas E. Reed<sup>1,2</sup>

<sup>1</sup>School of Biological, Earth and Environmental Sciences, University College Cork, Cork, Ireland

<sup>2</sup>Environmental Research Institute, University College Cork, Cork, Ireland

<sup>3</sup>Leetown Science Centre, S.O. Conte Anadromous Fish Research Laboratory, U.S. Geological Survey, Turners Falls, MA, USA

<sup>4</sup>Food Packaging Group, School of Food and Nutritional Sciences, University College Cork, Cork, Ireland

<sup>5</sup>Marine Institute, Newport, Ireland

<sup>6</sup>Inland Fisheries Ireland, Dublin, Ireland

## Correspondence

Louise C. Archer, School of Biological, Earth and Environmental Sciences, University College Cork, Distillery Fields, North Mall, Cork, Ireland.

Email: l.archer@umail.ucc.ie

## Funding information

Science Foundation Ireland, Grant/Award Number: 15/IA/3028 and 16/BBSRC/3316; Marine Institute, Grant/Award Number: RESPI/FS/16/01; European Research Council, Grant/Award Number: 639192-ALH

## Abstract

With rapid global change, organisms in natural systems are exposed to a multitude of stressors that likely co-occur, with uncertain impacts. We explored individual and cumulative effects of co-occurring environmental stressors on the striking, yet poorly understood, phenomenon of facultative migration. We reared offspring of a brown trout population that naturally demonstrates facultative anadromy (sea migration), under different environmental stressor treatments and measured life history responses in terms of migratory tactics and freshwater maturation rates. Juvenile fish were exposed to reduced food availability, temperatures elevated to 1.8°C above natural conditions or both treatments in combination over 18 months of experimental tank rearing. When considered in isolation, reduced food had negative effects on the size, mass and condition of fish across the experiment. We detected variable effects of warm temperatures (negative effects on size and mass, but positive effect on lipids). When combined with food restriction, temperature effects on these traits were less pronounced, implying antagonistic stressor effects on morphological traits. Stressors combined additively, but had opposing effects on life history tactics: migration increased and maturation rates decreased under low food conditions, whereas the opposite occurred in the warm temperature treatment. Not all fish had expressed maturation or migration tactics by the end of the study, and the frequency of these 'unassigned' fish was higher in food deprivation treatments, but lower in warm treatments. Fish showing migration tactics were smaller and in poorer condition than fish showing maturation tactics, but were similar in size to unassigned fish. We further detected effects of food restriction on hypo-osmoregulatory function of migrants that may influence the fitness benefits of the migratory tactic at sea. We also highlight that responses to multiple stressors may vary depending on the response considered. Collectively, our results indicate contrasting effects of environmental stressors on life history trajectories in a facultatively migratory species.

## KEYWORDS

anadromy, antagonistic interaction, aquatic, brown trout, climate change, multiple stressors, partial migration, *Salmo trutta*

## 1 | INTRODUCTION

Against the backdrop of rapid global change, organisms are increasingly exposed to a variety of pressures stemming from anthropogenic activities (Sanderson et al., 2002). Temperature increases, habitat degradation, pollution, exploitation and land use changes are examples of pressures, or 'stressors', that contribute to the recent patterns of population and biodiversity decline, and altered ecosystem functioning (Parmesan, 2006; Walther et al., 2002). While much research has addressed the effects of individual stressors, in practice, stressors rarely occur in isolation, and it is imperative we also understand the combined effects of multiple stressors (Breitburg et al., 1998) in order to better forecast and manage species' responses to global change (Côté, Darling, & Brown, 2016). This is not necessarily straightforward, however, with co-occurring stressors—defined here as biotic or abiotic changes beyond the range typically experienced under natural conditions (Breitburg et al., 1999; Crain, Kroeker, & Halpern, 2008)—potentially acting additively, synergistically or antagonistically (Crain et al., 2008; Folt, Chen, Moore, & Burnaford, 1999).

Although a growing body of research is now expanding beyond single-stressor approaches, uncertainty still surrounds the net effects of co-occurring stressors, and empirical studies have provided mixed results. Meta-analyses suggest that synergistic effects dominate in the marine sphere (Crain et al., 2008; Harvey, Gwynn-Jones, & Moore, 2013; Przeslawski, Byrne, & Mellin, 2015), but antagonistic effects (Byrne & Przeslawski, 2013) and additive effects (O'Gorman, Fitch, & Crowe, 2012) have also been reported. In freshwater systems, which are particularly sensitive to multi-faceted change (Ormerod, Dobson, Hildrew, & Townsend, 2010), antagonistic effects of multiple stressors are most prevalent (Jackson, Loewen, Vinebrooke, & Chimimba, 2016).

The effects of stressors may be highly context-specific. For example, increased temperature is a stressor likely to be experienced almost universally across natural systems, yet the impacts of warming at the individual level can range from positive to negative depending on whether optimum performance temperatures are exceeded (Huey & Stevenson, 1979; Sinclair et al., 2016). Moreover, stressor effects can differ depending on the trait/response, or the level of organization considered, for example, warming can increase individual metabolic and feeding rates, but may reduce survival, cause population/species extinctions (Fussmann, Schwarzmüller, Brose, Jousset, & Rall, 2014; Petchey, McPhearson, Casey, & Morin, 1999) or alter community stability due to long-term changes in species' interaction strengths (Rall, Vucic-Pestic, Ehnes, Emmerson, & Brose, 2010). Predicting stressor effects at multiple levels is likely to be additionally challenging when more than one stressor is involved (Galic, Sullivan, Grimm, & Forbes, 2018).

An understudied aspect of multiple stressors is how effects at the individual level shape life history trajectories, which in turn may mediate how stressors scale up to influence higher level (e.g. population, community, ecosystem) processes. One fundamental decision that many animals face, which is associated with a broad range of life history and eco-evolutionary consequences,

is whether to migrate or not. Facultative migration—the phenomenon whereby individuals retain the capacity to adopt either a migratory or a non-migratory lifestyle—is common across many animal taxa (Chapman, Brönmark, Nilsson, & Hansson, 2011; Kaitala, Kaitala, & Lundberg, 1993; Lack, 1943; Lundberg, 1987; Swingland & Greenwood, 1984), with well-documented examples in birds (Berthold & Querner, 1982; Lundberg, 1988; Newton, 2008; Pulido, Berthold, & vanNoordwijk, 1996), ungulates (Ball, Nordengren, & Wallin, 2001; Cagnacci et al., 2011; Hebblewhite & Merrill, 2011), zooplankton (Hansson & Hylander, 2009) and fishes (Chapman et al., 2012; Dodson, Aubin-Horth, Thériault, & Páez, 2013; Jonsson, 1985; Northcote & Ward, 1985). Environmental stresses such as limited food or inclement temperatures often appear to play a role in driving individuals to migrate (Chapman et al., 2012). Alternative migratory phenotypes have often been considered within the framework of the 'environmentally cued threshold model' (Buoro, Gimenez, & Prévost, 2012; Piche, Hutchings, & Blanchard, 2008; Pulido, 2011; Tomkins & Hazel, 2007), in which tactic frequencies are controlled by the relationship between an environmentally sensitive status trait (e.g. physiological condition or energy status) and an inherited threshold, assumed to be genetically variable. If the status trait exceeds the threshold, or 'switch point,' residency occurs; if not, migratory tactics are adopted. Environmental factors are likely to be important drivers of migratory tactics at both proximate and ultimate levels, yet few studies have addressed how facultatively migratory species respond to pressures arising from environmental change (Doswald et al., 2009), either in isolation or when stressors act in combination.

Salmonine fishes (trouts, salmon and charrs) represent an excellent group to study multiple stressor effects (de Eyto et al., 2016; McGinnity et al., 2009). In facilitating obligate freshwater spawning, salmonines display a suite of migratory phenotypes, encompassing residents that remain in natal streams their entire lives, individuals that migrate to larger rivers or lakes (potomodromy) and others still that undertake a marine migration before returning to fresh water to spawn (anadromy; Dodson et al., 2013; Ferguson, Reed, Cross, McGinnity, & Prodöhl, 2019; Klemetsen et al., 2003; Nevoux et al., 2019). The migration versus residency decision represents a trade-off, where the benefits of migration (avoiding abiotic or biotic stresses in the natal stream, exploiting better food resources in the new environment, which translate into higher growth and thus higher fecundity or mating success) must be balanced against the costs (energetic demands of migration, physiological stress of changing environments/habitats, a potentially increased risk of predation; Kendall et al., 2014). Environmental conditions in natal fresh waters can interact with intrinsic physiological traits to determine alternative migratory tactics, for example, if food resources cannot support growth or metabolism in early life, the resulting energetic deficit may promote migration. Food resources have been shown to directly (Archer et al., 2019; Davidsen et al., 2014; Jones, Bergman, & Greenberg, 2015) and indirectly influence migration (O'Neal & Stanford, 2011; Olsson,

Greenberg, Bergman, & Wysujack, 2006; Wysujack, Greenberg, Bergman, & Olsson, 2009). Similarly, because temperature profoundly influences biological processes (Dell, Pawar, & Savage, 2011; Gillooly, Brown, West, Savage, & Charnov, 2001), temperature effects on physiological status traits/energetic balance likely make it an important environmental determinant of migratory decisions. Higher temperatures have been associated with increased anadromy in lieu of maturation in steelhead trout *Oncorhynchus mykiss* (Sloat & Reeves, 2014), but under experimental conditions of constant food supply. Warming is likely to be accompanied by reductions in freshwater macroinvertebrate abundance (Durance & Ormerod, 2007), with potentially synergistic effects if elevated metabolic demands induced by warming are compounded by low food availability.

Environmental stressors may also act to affect the performance of individuals once a migratory decision has been made. Although migration potentially confers many benefits on individuals, the ensuing costs mean that environmental conditions experienced prior to outmigration might further affect the future success of migrants, both during migration and in the subsequent environment (river, lake or sea; McCormick, Lerner, et al., 2009). Sea migration in particular requires substantial physiological remodelling for transitioning to salt water, and the changes in physiological regulation of ions, colouration and body shape (collectively termed 'smolting', Tanguy, Ombredane, Baglinière, & Prunet, 1994) necessitate an expensive investment by individuals that is likely to begin long before the migration is initiated, and hence may be affected by environmental stressors. Empirical evidence suggests that once the migratory decision is made, migrants divert resources towards accelerated growth (Metcalfe, 1998). Smolt survival at sea is positively related to size (Ward & Slaney, 1988) and, as such, favourable freshwater conditions may produce larger and more successful migrants, with associated fitness benefits altering the migration–residency trade-off.

Here, we present the results of an experimental laboratory study of physiology, migration, and maturation of brown trout, using the F1 progeny of wild-caught parents from a population that exhibits facultative migration in nature. We aimed to explore if, and how, life history decisions are shaped by individual and interactive effects of two putative extrinsic environmental stressors. Specifically, we aimed to: (a) determine the effects of food restriction and elevated temperature on a range of physiological traits (size, mass, condition, lipids); (b) assess the life history consequences, in terms of migratory tactics and maturation decisions, of these stressors (both in isolation and combined); and (c) explore how environmental stressors affect future migratory performance. We expected that food reduction and elevated temperature would each increase the prevalence of migratory tactics, with potentially synergistic effects when the stressors were combined. We also expected stressors to negatively affect future migratory capacity of anadromous individuals by reducing potential for fast growth (and thus reducing smolt viability), or by inhibiting osmoregulation in salt water.

## 2 | MATERIALS AND METHODS

### 2.1 | Study population and fish rearing

Brown trout brood stock from a wild population were caught by seine-netting in November 2015 in Tawnyard Lough, an upland lake of 56 ha in the Erriff catchment (National Salmonid Index Catchment) in the west of Ireland (53°37'0.00"N; 09°40'17.10"W). Tawnyard Lough is fed primarily by the Glendavoch river, and a number of smaller tributaries (Figure S1). Brown trout primarily spawn within the Glendavoch River and move downstream as fry or parr to Tawnyard Lough, a distance of a few hundred meters to kilometers, depending on where spawning occurred. Tawnyard Lough produces a large run of out-migrating anadromous juveniles (smolts), with annual estimates of 500–3000 smolts enumerated at the outflow of the Lough over the last 30 years (Gargan, Kelly, Shephard, & Whelan, 2016). An unknown proportion of the population remains within the lake, and undergoes several years of freshwater growth before returning to the natal stream to spawn. While the migration phenotypes of the brood stock could not be determined unambiguously in this study (because external signs of prior migration are not completely unambiguous in this system), we assumed that the frequencies of migratory/resident phenotypes among our brood stock were broadly representative of naturally occurring frequencies, given that brood stock were obtained haphazardly. Moreover, our goals in this study were not to test explicitly for inherited variation in migration tactics, but rather to explore proximate (environmental) drivers. The caveat must be kept in mind, however, that any environmental effects we document are contingent on the genotypic composition of our sample.

Each ripe female ( $n = 7$ ) was stripped of eggs, which were then split into two batches, and each batch was fertilized by the milt of a single male ( $n = 10$ ) i.e. each female was mated to two males, creating 14 full-sib families. Due to constraints in obtaining brood stock and variation in the timing of when females were ripe to be stripped, eggs were fertilized on three occasions in November and December 2015 (see Table S1 fertilization/brood stock crossing details). Fertilized eggs from each crossing were incubated separately in standard Heath trays in the nearby Burrishoole hatchery. Prior to exogenous feeding, fry from the late November/early December fertilizations (hereafter 'Nov-Dec fertilization group') were transferred to a rearing facility at University College Cork (Aquaculture and Fisheries Development Centre). Here, families were mixed, and fry were held in a 100 L growth tank on a recirculating aquaculture system (RAS), maintained by a conditioning unit at a seasonally varying temperature regime approximating that of the catchment from which the brood stock were obtained (i.e. the annual cycle in mean weekly temperatures in the nearby Burrishoole catchment for the preceding 3 years, see Figure S2). Due to initial logistical constraints in achieving low temperatures, temperatures in winter 2015 were higher than the mean ambient temperatures (Figure S2). Fry were fed ad libitum with commercially available trout pellets (Skretting Ltd.) to facilitate their transition to exogenous feeding (by June 2016), and

were then fed ad libitum until the experimental phase began. Fish experienced a constant photoperiod (12:12 hr of light:dark) during this initial rearing phase. Due to logistical constraints, an additional group of fry from the first fertilization event (termed 'Nov fertilization group') was maintained at a natural temperature regime in a flow-through tank at the Burrishoole hatchery facility, where they transitioned to exogenous feeding via ad libitum feeding with the same trout pellets. Fry from the Nov group were transported to the UCC rearing facility in May 2016, and reared in a 100 L tank, in the same RAS and under the same conditions as the Nov-Dec fertilization group. Due to size differences (Nov group fish were larger than Nov-Dec group fish by the beginning of the experiment), the two fertilization groups were reared in separate tanks for the duration of the study to prevent emergence of feeding hierarchies.

## 2.2 | Experimental treatments

The study and all associated procedures were carried out with ethical approval from Health Products Regulatory Authority (HPRA) Ireland, under HPRA project license AE19130/P034, and individual licenses AE19130/1087, AE19130/I200, AE19130/I201 and AE19130/I202. The experimental phase ran for an 18 month period from December 2016 to June 2018 with all fish humanely euthanized at the end of the experiment.

Juvenile brown trout were randomly allocated across eight 520 L tanks at the end of November 2016 (initial  $n = 140$  per tank for Nov-Dec group, and  $n = 35$  per tank [filled to 203 L] for Nov group), each assigned one of two temperature treatments and one of two food treatments. Water flowed continually through tanks to prevent the buildup of waste, returned to a central sump via mechanical filtration and was treated with protein skimming, biofiltration and UV skimming. Weekly monitoring of water quality indicated that the levels of pH, nitrate, nitrite and ammonia were well within acceptable ranges for fish health. Mortality during the experimental phase was minimal (4%). To avoid compromising water quality with excessive biomass, fish were culled haphazardly ( $n = 229$  in total across all treatments) over the 2 years of tank rearing, with equal densities in terms of fish numbers (fish per L) maintained across treatment groups and equal biomass densities (g per L) maintained between fertilization groups. Fish culled in this manner were not included in the analyses.

To explore the individual and interactive effects of food restriction and temperature in determining migratory tactics, food and temperature treatments were applied in isolation and in combination for both fertilization groups for the duration of the experimental phase. The two food treatments were: (a) high food treatment: fish fed recommended daily rations for optimal growth calculated as a percentage of their body mass and adjusted for seasonally changing temperatures (Skretting Ltd.), and (b) low food treatment: fish fed 25% of optimal daily rations. A value of 25% of optimal daily rations was chosen for the low food treatment because similar restrictions have previously been shown to reduce the frequency of residency in adfluvial brown trout (Wysujack et al., 2009). The two

temperature regimes were achieved by passing water through one of two conditioning units that maintained two temperature treatments as follows: (a) cool temperature treatment: temperatures matching the natural, seasonally varying, temperature regime for the Erriff catchment; and (b) warm temperature treatment: temperatures elevated by  $1.8^{\circ}\text{C} \pm 0.55$  (SD) above the cool temperature treatment. The cool treatment ranged from 5.9 to 16.4°C (mean temperature =  $10.9^{\circ}\text{C} \pm 3.2$  SD) and the warm treatment ranged from 7.5 to 18.2°C (mean temperature =  $12.7^{\circ}\text{C} \pm 3.2$  SD). An increase of 1.8°C for the warm temperature treatment was chosen because this is in line with increases of 1–3°C projected to occur under climate change scenarios (IPCC, 2014). While both treatments remained within sublethal ranges for brown trout (Forseth et al., 2009; Jonsson & Jonsson, 2009), the warm temperature treatment was considered 'stressful' because the maximum temperatures in the warm treatment approached upper thermal growth limits for brown trout (18.7°C). Optimal temperatures for growth have been estimated to be between 13.1 and 13.9°C (Elliott & Elliott, 2010; Elliott & Hurley, 2000; Hari, Livingstone, Siber, Burkhardt-Holm, & Güttinger, 2006; Kovach et al., 2016). Temperatures in the warm treatment remained above this for twice as long as those in the cool treatment, which remained closer to optimal growth conditions. Food rations were reduced over 4 weeks and temperature was increased by 0.5°C per week to minimize stress. Food was dispensed to each tank via automatic feeders (Arvo-Tec Oy) during daylight hours. Feeders delivered regular pulses of food, with the frequency of pulses adjusted according to food treatment (i.e. fewer pulses for low food treatments). Within each treatment, absolute rations were adjusted on a monthly basis to account for changes in body mass and temperature.

## 2.3 | Data collection and life history determination

Within each food and temperature treatment combination, 25–30 fish from each fertilization group were lightly anaesthetized with MS-222 and marked with unique colour combinations of visible implant elastomer (VIE) tags (Northwest Marine Technology Ltd.), allowing for reidentification of individuals. Fork length and mass were measured at key periods throughout the study [Late-November in 2016 (prior to initiation of treatments), February, April, June, July, September, December in 2017 and April in 2018].

All fish were checked weekly for morphological indicators of smolting from March to June in each of 2017 and 2018, the period corresponding to the natural migratory period in the wild for this population (Gargan et al., 2016). Wild smolts typically migrate out of the Erriff system aged between 1+ and 4+, with the large majority doing so aged 2+ or 3+ (approximately equal numbers of each; Gargan et al., 2016). Smolting is a precursor to downstream migration in several salmonines, and comprises a number of morphological, behavioural and physiological changes. We used the following morphological indicators to assess smolting (following Tanguy et al., 1994): silvering/loss of parr marks; pronounced lateral line (i.e. clearly visible and raised to the touch); transparent fins; and fusiform shape

(pointed snout, slimmer body and elongated caudal peduncle; Hard, Winans, & Richardson, 1999; Riddell & Leggett, 1981; Villar-Guerra, Larsen, Baktoft, Koed, & Aarestrup, 2019). Fish that clearly matched three of these criteria were classed as smolts. In spring 2017, no fish matched the morphological criteria for smolts. In spring 2018, fish that matched the morphological criteria for smolts were transferred to salt water at 30 ppt for 24 hr to assess hypo-osmoregulatory function. Seawater 'challenges' are used as an indicator of anadromy capacity, where the ability to regulate ion concentrations (e.g. to maintain plasma chloride concentration) in sea water is a measure of saltwater tolerance, or physiological 'readiness' of smolts for seawater entry (Clarke, 1982; McCormick, 2012; McCormick, Hansen, Quinn, & Saunders, 1998; Schultz & McCormick, 2012). Fish were monitored during this period to ensure that any fish showing signs of failing the challenge (loss of equilibrium) could be removed and euthanized (though no fish showed signs of failure in our study). After the 24 hr seawater challenge, fish were euthanized with an overdose of MS-222. The mass and fork length of each individual was recorded, and a blood sample was obtained from the caudal vasculature using a 21 gauge needle and a 2.6 ml heparinized syringe. Blood samples were centrifuged at 8,000 rpm for 3 min, and the plasma aliquot was siphoned off, stored at  $-80^{\circ}\text{C}$  and later measured for plasma chloride concentration as an indicator of osmoregulatory performance. Four to six gill filaments were placed in 100  $\mu\text{l}$  of ice-cold SEI buffer (150 mmol/l sucrose, 10 mmol/l EDTA, 50 mmol/l imidazole, pH 7.3) and frozen at  $-80^{\circ}\text{C}$  for later measurement of gill  $\text{Na}^+/\text{K}^+$ -ATPase (NKA) activity.

All fish (classed morphologically as smolts or non-smolts) were dissected in spring 2018 to visually determine sex and maturation status based on gonad development. Mature males had enlarged white testes or running milt. Maturing males had visible or moderately enlarged testes but no running milt. Mature females had visible eggs in the body cavity. Immature fish (unconfirmed sex at the time of sampling) were later genotyped to determine genotypic sex using a microsatellite sex marker. The natural spawning period for the wild population-of-origin is in late autumn/early winter, and the migratory period is in the spring (Gargan et al., 2016). Since freshwater maturation generally precludes migration in brown trout (Dębowski & Dobosz, 2016; Dellefors & Faremo, 1988; Jonsson, 1985), any fish showing signs of maturing without having migrated to sea are considered to be on a non-anadromous trajectory, while smolts which undertake marine migrations are immature. We thus classed fish as smolts (migratory tactic) if they matched the morphological criteria for smolts and were immature. Fish were classed as mature (residency tactic) if they showed signs of maturation at the time of sampling. Fish that were immature and did not match the morphological criteria for smolts had an unknown life history at the time of sampling and were classed as 'unassigned'. Whole body lipid content (%) was measured for all smolts and a random sample of mature ( $n = 107$ ) and unassigned ( $n = 19$ ) fish using a CEM Smart trac5 system of integrated heating and nuclear resonance (CEM Corporation) on individual homogenized fish samples (Keeton et al., 2003; Nielsen, Hyldig, Nielsen, & Nielsen, 2005; Toussaint et al., 2002). Plasma chloride

concentration was measured by coulometric titration using a Jenway PCLM3 chloride meter (FishVet Group, Oranmore, Ireland) for all smolts and a random sample of non-smolts ( $n = 107$  mature fish and  $n = 18$  unassigned fish). Gill NKA activity was measured following McCormick, Regish, and Christensen (2009) for a random sample of smolts and non-smolts ( $n = 25$  smolts,  $n = 135$  mature fish and  $n = 22$  unassigned fish).

## 2.4 | Statistical analysis

To test if food and temperature acted as stressors at the level of individual traits underpinning migration (Aim 1), we explored factors affecting fork length, mass and condition of fish across the study period within a mixed effects modelling framework (*nlme* package; Pinheiro, Bates, DebRoy, & Sarkar, 2019). We calculated condition factor as:

$$\text{Condition factor} = \frac{\text{mass (g)}}{\text{fork length (cm)}^b} \times 100,$$

where  $b$  is the slope estimated from the linear relationship between  $\log(\text{mass})$  and  $\log(\text{fork length})$ ; Bolger & Connolly, 1989). The mixed effects models included time (continuous variable representing weeks since start of experiment), a quadratic term for time (to account for non-linearity of traits through time), food treatment, temperature treatment, fertilization group and sex as fixed effects, and individual identity as a random effect to account for multiple measurements on some individuals. We included an interaction between food treatment and temperature treatment (to test for synergistic or antagonistic effects of food and temperature), and a three-way interaction (food treatment  $\times$  temperature treatment  $\times$  time) to test whether trajectories diverged through time according to treatment combination. To compare single stressor effects with combined stressor effects, we carried out pairwise comparisons across all levels of the food  $\times$  temperature interaction using Tukey post hoc tests (*emmeans* package Lenth, 2019).

To test whether trait trajectories were similar in mature fish and smolts, we created additional mixed effects models with time, a quadratic term for time, migratory tactics (categorical variable, two levels: smolt/mature), sex and fertilization group as fixed effects, an interaction between time and migratory tactics and a random effect of individual identity. We excluded unassigned fish in this comparison of 'status' traits, as we could not determine their life history trajectory, that is, some of the unassigned fish may have been on a migratory trajectory, but were deferring actual migration until a later age. For all of the above models, temporal autocorrelation of the response variable was accounted for by modelling an autoregressive error structure as a first-order lag function of time. Separate models were constructed for z-standardized measures of length, mass and condition, and normal errors were assumed in each case.

We similarly used mixed effects models (normal errors) to explore factors influencing variation in final measurements of traits



(z-standardized length, condition and whole body lipids) at the end of the study. We included food treatment, temperature treatment, fertilization group, sex and an interaction between food treatment and temperature treatment as fixed effects, and date of terminal sample (categorical variable with eight sampling dates) as a random effect. Additional mixed effects models tested for differences in final measurements of status traits according to migratory tactics (migratory tactic, sex and fertilization group included as fixed effects, and terminal sample date as a random effect).

To test if food and temperature treatments affected life history tactics (Aim 2), we built three generalized linear models (GLMs) with a logit-link function and binary life history response variables. One GLM predicted smolt status (binary response: 1 = smolt, 0 = non-smolt), a second GLM predicted maturation (binary response: 1 = mature, 0 = immature) and a third GLM tested for differences in expression of any life history tactics by the end of the study (i.e. by age 2+, second year of life; binary response: 1 = unassigned, 0 = smolt or mature). All GLMs included the categorical variables: food treatment, temperature treatment, sex, fertilization group and an interaction between food and temperature treatments.

To explore variation in osmoregulatory performance, we first tested for differences in gill NKA activity (log transformed) and plasma chloride concentration between smolts and non-smolts using mixed effects models (normal errors). Each model included life history tactic, fertilization group, and sex as fixed effects, and terminal sampling date as a random effect. We retained the 'unassigned' life history class in these analyses to determine if unassigned fish showed signs of hypo-osmoregulatory capacity in salt water relative to mature fish, suggesting that these unassigned fish were in fact on a smolting trajectory but were yet to express morphological indicators of smolting. Post hoc pairwise comparisons between life history tactics were carried out using the *emmeans* package (Lenth, 2019).

We explored the mechanisms underpinning osmoregulatory capacity by fitting a GLM (normal errors) to gill NKA activity as a function of size-corrected plasma chloride concentration in smolts

and non-smolts. Because hypo-osmoregulatory capacity generally increases with size in brown trout (Finstad & Ugedal, 1998), we corrected for size in this analysis by using the residuals of the linear relationship between plasma chloride and fork length. Finally, we assessed how food and temperature treatments influenced osmoregulatory capacity of smolts (Aim 3) using mixed effects models. Separate models (normal errors) were constructed for z-standardized gill NKA activity and plasma chloride concentration, with food treatment, temperature treatment, sex, fertilization group, fork length (a covariate to correct for body size effects) and a food × temperature interaction included as fixed effects, and terminal sample date as a random effect.

Marginal  $R^2$  values for mixed effect models were calculated using the *MuMIn* package in R (Barton, 2019). We used likelihood ratio tests (LRT) to assess statistical significance of predictor variables for all models at a 5% alpha level, and non-significant interaction terms were excluded to interpret main effects. Analysis was carried out in R version 3.5.3 (R Core Team, 2019), and all models were checked against assumptions of the given model (independence, non-normality of residuals, heteroscedasticity and multicollinearity).

### 3 | RESULTS

At the termination of the experiment, 349 fish were assigned a life history tactic (30 smolts and 319 mature fish) and 76 fish were classed as 'unassigned' (Table 1). The frequency of smolting varied by food and temperature treatments. Overall, the proportion of smolts (averaged across Nov and Nov-Dec fertilization groups) was highest in the low food-cool temperature treatment (18.9%), with the lowest proportion in the high food-warm temperature treatment (0.9%), and intermediate proportions in low food-warm temperature (4.6%) and high food-cool temperature treatments (3.8%). The highest proportion of mature fish was in the high food-warm temperature treatment (92.5%), followed by similar proportions in high food-cool temperature (75.2%)

**TABLE 1** Percentage of brown trout ( $n = 425$ ), F1 offspring of wild trout, classed as smolts (i.e. migratory tactic) or non-smolts (mature or unassigned) after 2 years of experimental tank-rearing

Food	Temperature	Fertilization Group	% Smolts ( $n$ )		% Mature ( $n$ )		% Unassigned ( $n$ )	
			Female	Male	Female	Male	Female	Male
Low	Cool	Nov	6.1 (2)	3.0 (1)	48.5 (16)	6.1 (2)	6.1 (2)	30.3 (10)
Low	Cool	Nov-Dec	15.1 (11)	8.2 (6)	19.2 (14)	39.7 (29)	8.2 (6)	9.6 (7)
Low	Warm	Nov	0 (0)	0 (0)	51.5 (17)	36.4 (12)	3.0 (1)	9.9 (3)
Low	Warm	Nov-Dec	2.7 (2)	4.0 (3)	41.3 (31)	28.0 (21)	2.7 (2)	21.3 (16)
High	Cool	Nov	2.9 (1)	0 (0)	32.4 (11)	32.4 (11)	5.9 (2)	26.5 (9)
High	Cool	Nov-Dec	2.8 (2)	1.4 (1)	43.7 (31)	36.6 (26)	2.8 (2)	12.7 (9)
High	Warm	Nov	0 (0)	0 (0)	61.8 (21)	23.5 (8)	2.9 (1)	11.8 (4)
High	Warm	Nov-Dec	1.4 (1)	0 (0)	48.6 (35)	47.2 (34)	0 (0)	2.8 (2)

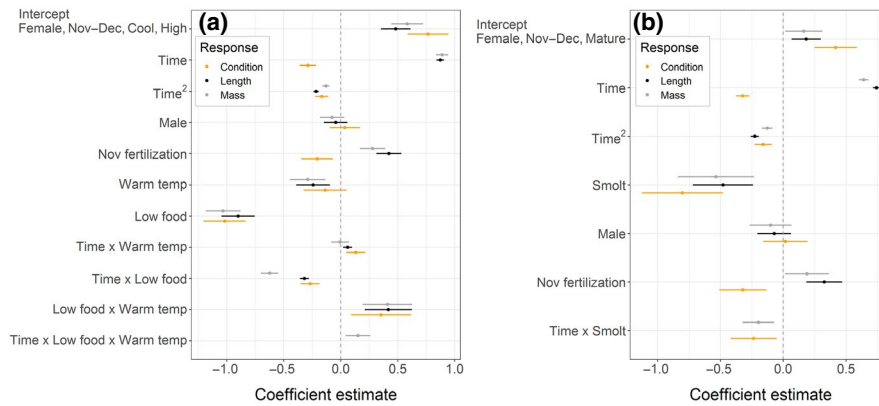
Note: Offspring were derived from brood stock gametes fertilized in November and December 2015 (coded here as early November = 'Nov' and late November/early December = 'Nov-Dec'). Values correspond to percentages for each category (broken down by sex) of the total number of fish per tank (where each tank corresponds to a given food treatment by temperature regime combination, i.e. a single row in the table). Sample size ( $n$ ) given in brackets after the %.

and low food–warm temperature treatments (75.0%). Maturation was lowest in the low food–cool temperature treatment (57.6%).

### 3.1 | Morphological trait trajectories

Physiological trait trajectories diverged through time in response to food treatment, temperature treatment and fertilization group (Figure 1a, Table 2). The models for length (marginal  $R^2 = .68$ ) and condition factor (marginal  $R^2 = .33$ ) retained significant interactions between food treatment and temperature treatment, food treatment and time and temperature treatment and time (Table 2). The model for mass (marginal  $R^2 = .61$ ) retained a significant time  $\times$  food  $\times$  temperature interaction (Table 2). Fertilization group had a significant effect on length ( $\chi^2 = 57.17$ ,  $df = 1$ ,  $p < .001$ ), mass ( $\chi^2 = 24.49$ ,  $df = 1$ ,  $p < .001$ ) and condition factor ( $\chi^2 = 8.73$ ,

$df = 1$ ,  $p = .003$ ), with fish in the Nov fertilization group tending to be larger and heavier than those in the Nov–Dec group, and in marginally lower condition. There was no significant effect of sex on length ( $\chi^2 = 0.73$ ,  $df = 1$ ,  $p = .394$ ), mass ( $\chi^2 = 2.01$ ,  $df = 1$ ,  $p = .156$ ) or condition factor ( $\chi^2 = 0.29$ ,  $df = 1$ ,  $p = .591$ ) across the study. When food and temperature stressors were experienced in isolation (i.e. a single treatment applied) fish receiving the low food treatment were smaller (post hoc comparison of low food–cool temperature vs. high food–cool temperature treatment:  $t = 12.06$ ,  $p < .001$ ), lighter ( $t = 13.26$ ,  $p < .001$ ) and in poorer condition ( $t = 10.74$ ,  $p < .001$ ). Fish in the warm temperature treatment were also smaller (warm temperature–high food vs. cool temperature–high food treatment:  $t = 3.23$ ,  $p = .007$ ), lighter ( $t = 3.66$ ,  $p = .002$ ), but in similar condition ( $t = 1.41$ ,  $p = .495$ ; Figure 2a,b,c). The positive interaction term between food treatment and temperature treatment indicated that effects of combined stressor

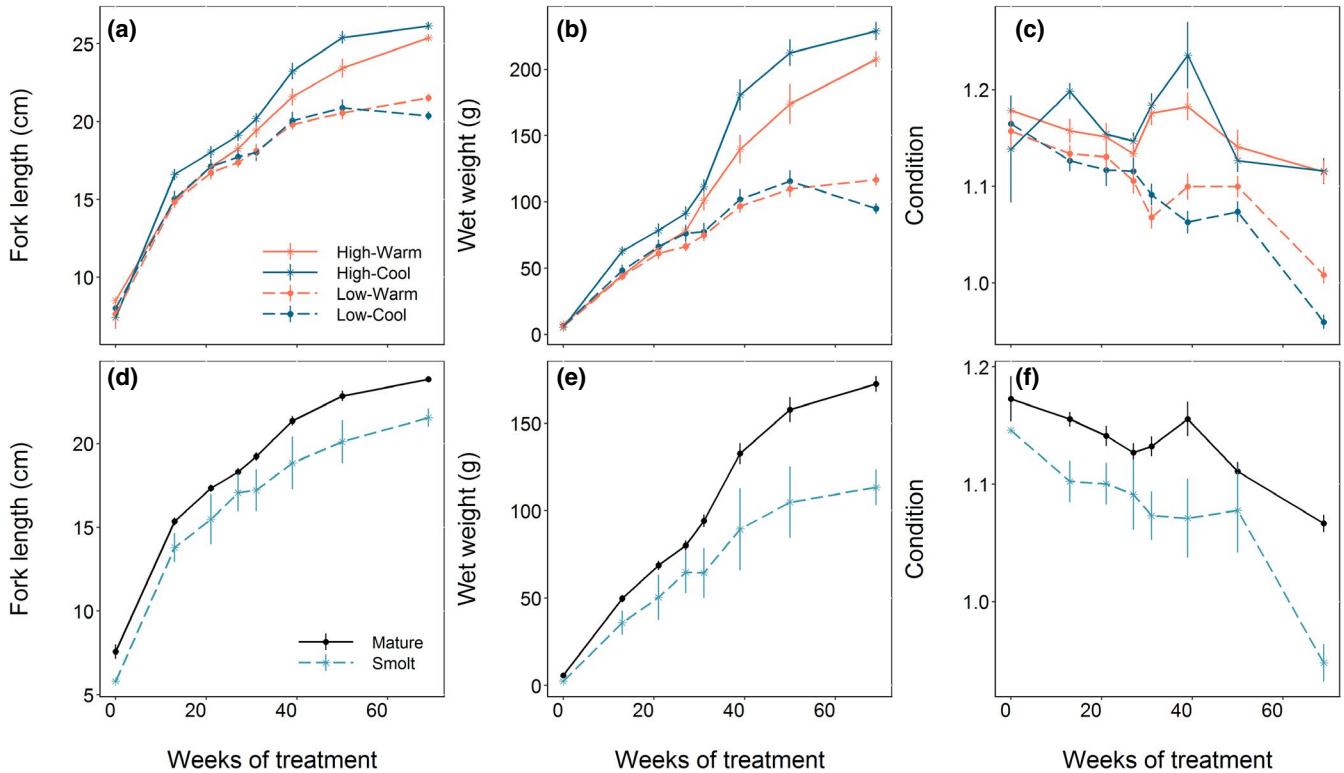


**FIGURE 1** Coefficient estimates ( $\pm$  associated standard errors) of mixed effects models describing z-standardized length, mass and condition trajectories of brown trout offspring (derived from wild-caught parents from a facultatively anadromous population) that were (a) exposed to food and temperature stressors and (b) classified as adopting either smolt (migratory tactic) or freshwater maturing (non-migratory/resident) tactics after 18 months of tank rearing

**TABLE 2** Results of the mixed effect model analysis for length, mass and condition trajectories of brown trout exposed to food and temperature stressors

Model	df	AIC	logLik	L-ratio	p-value
Length ~ time * food * temperature + time <sup>2</sup> + fertilization + sex	14	1,222.8	-597.4		
<b>Length ~ time * food + time * temperature + time<sup>2</sup> + food * temperature + fertilization + sex</b>	13	1,222.5	-598.3	1.8	.186
Length ~ time * food + time <sup>2</sup> + food * temperature + fertilization + sex	12	1,229.7	-602.8	9.1	.003
Length ~ time * temperature + time <sup>2</sup> + food * temperature + fertilization + sex	12	1,422.2	-699.1	201.6	<.001
Length ~ time * food + time * temperature + time <sup>2</sup> + fertilization + sex	12	1,236.1	-606.1	15.6	<.001
<b>Mass ~ time * food * temperature + time<sup>2</sup> + fertilization + sex</b>	14	1,667.1	-819.6		
Mass ~ time * food + time * temperature + time <sup>2</sup> + food * temperature + fertilization + sex	13	1,672.6	-823.3	7.5	.006
Condition ~ time * food * temperature + time <sup>2</sup> + fertilization + sex	14	3,023.4	-1,497.7		
Condition ~ <b>time * food + time * temperature + time<sup>2</sup> + food * temperature + fertilization + sex</b>	13	3,022.4	-1,498.2	0.9	.337
Condition ~ time * food + time <sup>2</sup> + food * temperature + fertilization + sex	12	3,029.8	-1,502.9	9.4	.002
Condition ~ time * temperature + time <sup>2</sup> + food * temperature + fertilization + sex	12	3,059.6	-1,517.8	39.3	<.001
Condition ~ time * food + time * temperature + time <sup>2</sup> + fertilization + sex	12	3,027.3	-1,501.7	7.0	.008

Note: The results of the model selection procedure on interaction terms are given, and the selected model for each response is highlighted in bold. The models included a random effect of individual identity and a first-order autoregressive correlation structure with respect to time (weeks of experimental treatment) was also modelled.



**FIGURE 2** Trajectories of fork length, mass and condition of brown trout offspring (derived from wild-caught parents from a facultatively anadromous population) under different food treatments and temperature treatments (a, b, c), and classed according to life history tactics (d, e and f). Food and temperature treatments are denoted in the format ‘Food-Temperature’ (High or Low food, and Warm or Cool temperature) and life histories were classed as either smolt (migratory tactics) or mature (non-migratory). Week 0 = end of November 2015, when fish were 10–11 months old (Nov–Dec and Nov group respectively)

**TABLE 3** Results of the mixed effect model analysis for length, mass and condition trajectories of brown trout in the experiment with life history classed as either smolts (i.e. migratory) or freshwater mature across the study period

Model	df	AIC	logLik	L-ratio	p-value
Length ~ time*life history + time <sup>2</sup> + sex + fertilization	10	1,300.6	-640.3		
<b>Length ~ time + life history + sex + fertilization</b>	9	1,298.9	-640.4	0.2	.637
Mass ~ time*life history + time <sup>2</sup> + sex + fertilization	10	1,836.0	-908.0		
Mass ~ time + life history + time <sup>2</sup> + sex + fertilization	9	1,843.6	-912.8	9.7	.002
Condition ~ time * life history + time <sup>2</sup> + sex + fertilization	10	2,674.4	-1,327.2		
Condition ~ time + life history + time <sup>2</sup> + sex + fertilization	9	2,678.8	-1,330.4	6.4	.011

Note: The results of the model selection procedure on interaction terms are given, and the selected model for each response is highlighted in bold. The models included a random effect of individual identity and a first-order autoregressive correlation structure with respect to time (weeks of experimental treatment) was also modelled.

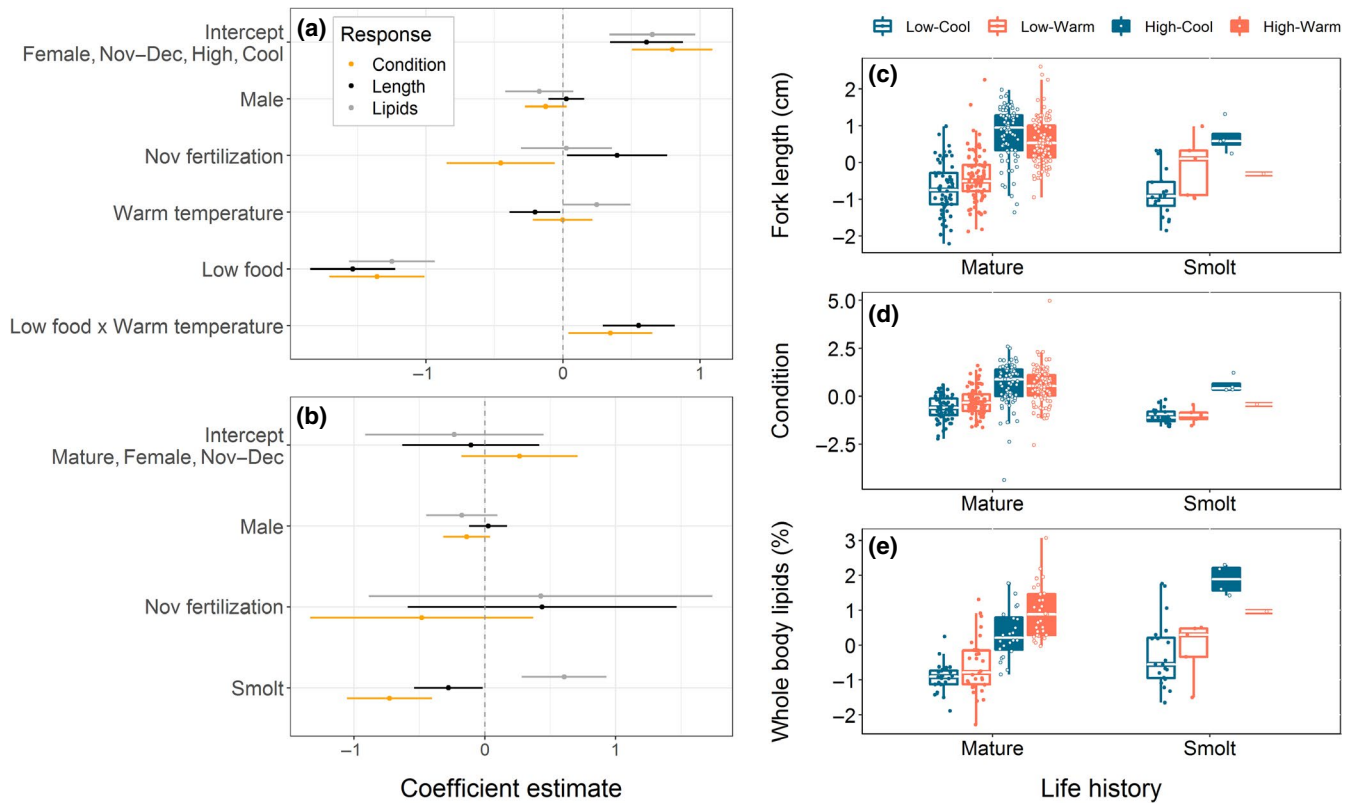
treatments on length, mass and K were less than we might expect based off their effects in isolation.

Fish also varied in length (marginal  $R^2 = .55$ ), mass (marginal  $R^2 = .36$ ) and condition factor (marginal  $R^2 = .16$ ) trajectories according to migratory tactics, with smolts tending to be smaller than mature fish across the duration of the study period ( $\chi^2 = 15.55$ ,  $df = 1$ ,  $p < .001$ ). The significant interaction between migratory tactics and time for mass and condition factor (Figure 1b, Table 3) indicated smolts gained less mass, with lower condition trajectories (Figure 2d,e,f).

### 3.2 | Morphological traits at the end of the study

At the end of the experiment, fish varied in length, condition and whole body lipids depending on food treatment, temperature treatment, life history tactics and fertilization group (Figure 3a,b). The models describing final length (marginal  $R^2 = .48$ ) and condition (marginal  $R^2 = .38$ ) each retained a significant interaction between food treatment and temperature treatment but the model describing whole body lipids (marginal  $R^2 = .41$ ) did not (Table 4). We detected significant negative main effects of food treatment





**FIGURE 3** Coefficient estimates ( $\pm$ standard errors) from mixed effect models describing effects of (a) food treatment and temperature treatment and (b) migratory tactics on z-standardized final measures of length, condition and whole body lipids of brown trout offspring classed as either smolts (migratory) or freshwater mature (non-migratory/resident) at the end of the experimental study (Spring 2018). Median values of (c) length, (d) condition and (e) whole body lipids are represented by the white horizontal lines in each box in (c), (d) and (e). Food and temperature treatments are denoted in the format 'Food-Temperature' (High or Low food, and Warm or Cool temperature). Note that only one smolt was recorded in the High-Warm treatment, and thus, there is no corresponding white line for the median in the High-Warm treatment

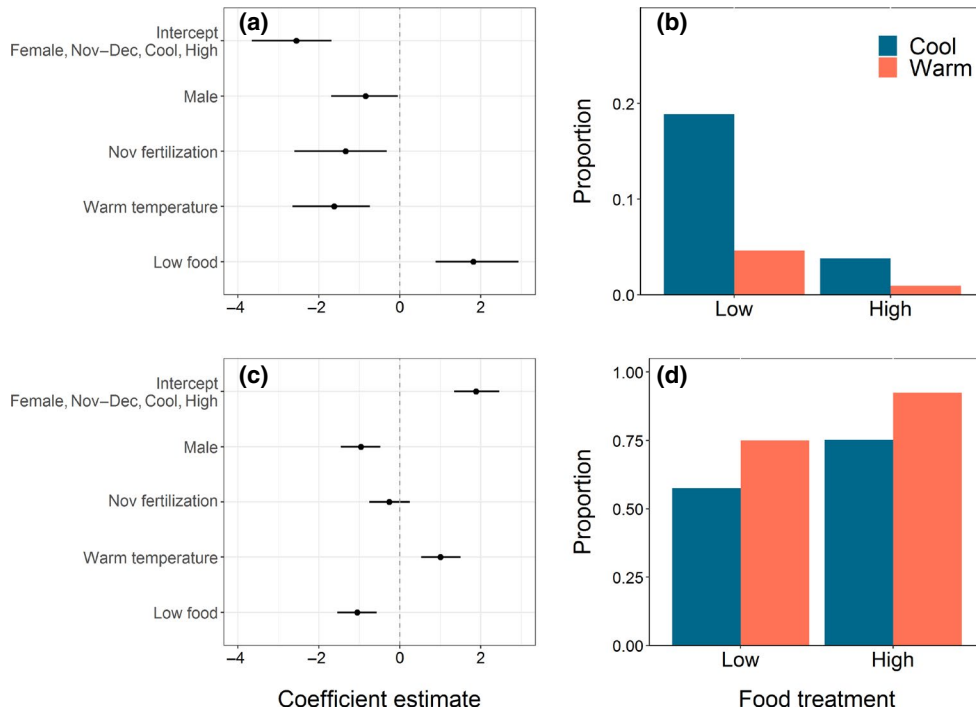
**TABLE 4** Results of the mixed effect model analysis for length, condition and whole body lipids of brown trout exposed to food and temperature stressors at the end of the experimental study period

Model	df	AIC	logLik	L-ratio	p-value
<b>Length ~ food * temperature + fertilization + sex</b>	8	901.5	-422.8		
Length ~ food + temperature + fertilization + sex	7	916.5	-451.3	16.98	<.001
<b>Condition ~ food * temperature + fertilization + sex</b>	8	1,034.0	-509.0		
Condition ~ food + temperature + fertilization + sex	7	1,036.9	-511.5	4.94	.026
Lipids ~ food * temperature + fertilization + sex	8	375.5	-179.8		
<b>Lipids ~ food + temperature + fertilization + sex</b>	7	375.7	-180.8	2.18	.140

Note: The results of the model selection procedure on interaction terms are given, and the selected model for each response is highlighted in bold. The models included a random effect of terminal sample date.

( $\chi^2 = 63.44$ ,  $df = 1$ ,  $p < .001$ ) but positive effects of temperature treatment ( $\chi^2 = 3.91$ ,  $df = 1$ ,  $p = .048$ ) on lipid levels (Figure 3a). The significant positive interaction term (Figure 3a) indicated an antagonistic effect of food and temperature treatments on length and

condition (Figure 3c,d,e). Fertilization group significantly affected length ( $\chi^2 = 4.56$ ,  $df = 1$ ,  $p = .033$ ) and condition ( $\chi^2 = 5.15$ ,  $df = 1$ ,  $p = .023$ ). Fish in the Nov fertilization group tended to be larger but in poorer condition, with similar lipid levels ( $\chi^2 = 0.02$ ,  $df = 1$ ,  $p = .880$ )



**FIGURE 4** Co-efficient estimates ( $\pm 95\%$  confidence intervals) of generalized linear models describing probability of adopting (a, b) migratory and (c, d) maturation tactics in brown trout ( $n = 425$ , F1 offspring of wild trout from a naturally facultatively anadromous population). Fish were classed as smolts or maturing after 18 months of tank rearing under varying food restriction and temperature treatments

**TABLE 5** Parameter estimates with associated standard errors (SE) for three binomial generalized linear models (GLM) predicting smolt (migratory) probability (dummy coded: smolt = 1, non-smolt = 0), freshwater maturation (dummy coded: mature/maturing = 1, immature = 0) and 'unassigned' life history tactics (dummy coded: unassigned = 1, smolt/mature = 0) in brown trout ( $n = 425$ )

Effect	Estimate	SE	t-value	p-value
<b>GLM of probability of smolting</b>				
Intercept (High-Cool, Female, Nov-Dec fertilization)	-2.559	0.494	-5.176	<.001
Food: Low	1.811	0.513	3.533	<.001
Temperature: Warm	-1.621	0.481	-3.372	.001
Fertilization group: Nov	-1.341	0.569	-2.358	.018
Sex: Male	-0.849	0.417	-2.037	.042
<b>GLM of probability of maturation</b>				
Intercept (High-Cool, Female, Nov-Dec fertilization)	1.879	0.284	6.625	<.001
Food: Low	-1.054	0.248	-4.242	<.001
Temperature: Warm	1.004	0.247	4.073	<.001
Fertilization group: Nov	-0.261	0.255	-1.023	.306
Sex: Male	-0.963	0.248	-3.888	<.001
<b>GLM of probability of being unassigned a life history</b>				
Intercept (High-Cool, Female, Nov-Dec fertilization)	-2.923	0.366	-7.986	<.001
Food: Low	0.644	0.276	2.337	.019
Temperature: Warm	-0.601	0.274	-2.192	.028
Fertilization group: Nov	0.784	0.281	2.789	.005
Sex: Male	1.655	0.311	5.320	<.001

Note: The reference level of each factor is in brackets, that is, effects in all models were contrasted against female fish from the Nov-Dec fertilization group in the High food and Cool temperature treatment. Statistical significance was assessed at  $p < .05$ .

to those in the Nov–Dec group. There was no significant effect of sex on length ( $\chi^2 = 0.14$ ,  $df = 1$ ,  $p = .712$ ), condition ( $\chi^2 = 2.60$ ,  $df = 1$ ,  $p = .107$ ) or lipids ( $\chi^2 = 1.91$ ,  $df = 1$ ,  $p = .167$ ).

Life history tactics significantly affected length ( $\chi^2 = 4.80$ ,  $df = 1$ ,  $p = .036$ ), condition ( $\chi^2 = 19.62$ ,  $df = 1$ ,  $p < .001$ ) and lipids ( $\chi^2 = 13.87$ ,  $df = 1$ ,  $p = .002$ ). Overall, smolts were smaller than mature fish, with lower condition values, and higher lipid levels (Figure 3b,c,d,e). Smolts and unassigned fish were similarly sized ( $\chi^2 = 0.35$ ,  $df = 1$ ,  $p = .554$ ), with similar lipid levels ( $\chi^2 = 1.49$ ,  $df = 1$ ,  $p = .222$ ), though smolts had lower condition values ( $\chi^2 = 0.748$ ,  $df = 1$ ,  $p = .006$ ; Figure S3).

### 3.3 | Migratory tactics

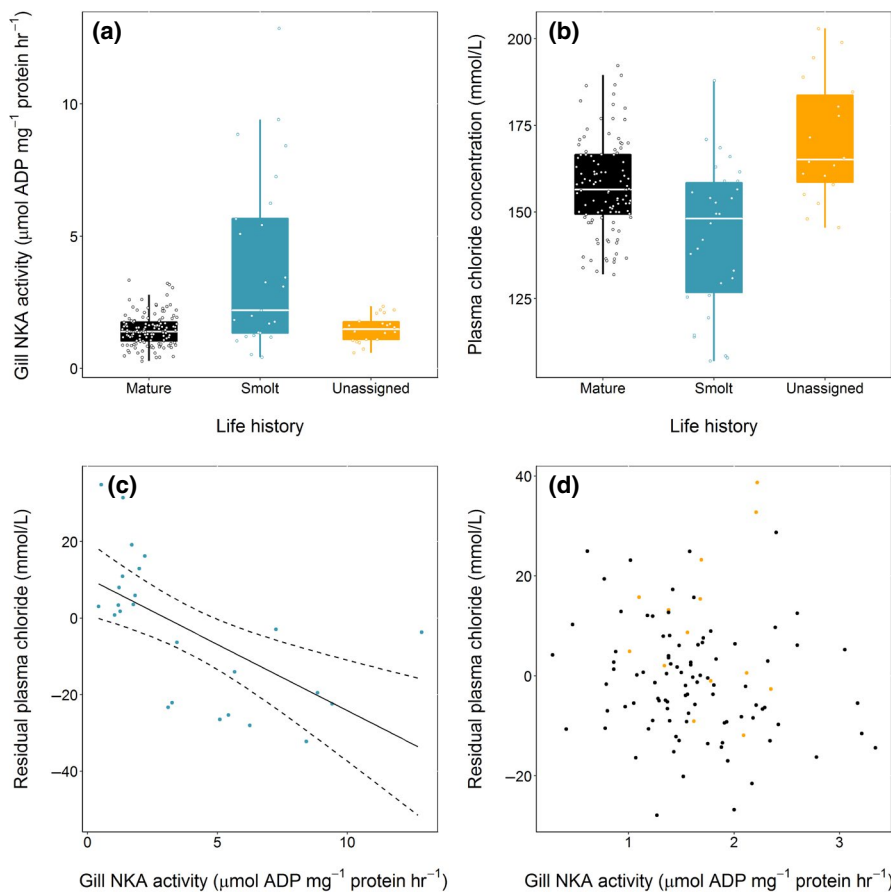
The model describing the probability of smolting had significant effects of food treatment ( $\chi^2 = 16.50$ ,  $df = 1$ ,  $p < .001$ ), temperature treatment ( $\chi^2 = 14.08$ ,  $df = 1$ ,  $p < .001$ ), fertilization group ( $\chi^2 = 7.09$ ,  $df = 1$ ,  $p = .008$ ) and sex ( $\chi^2 = 4.34$ ,  $df = 1$ ,  $p = .037$ ). The interaction between food treatment and temperature treatment was not significant (LRT for model with and without interaction term:  $\chi^2 = 0.02$ ,  $df = 1$ ,  $p = .882$ ). Food restriction increased the probability of smolting whereas the warm temperature treatment decreased the probability of smolting (Figure 4a,b). Males were less likely to smolt than females, and fish in the Nov fertilization group were less likely to smolt than those in the Nov–Dec group (Figure 4a,b).

The model describing the probability of maturing also had significant effects of food treatment ( $\chi^2 = 19.13$ ,  $df = 1$ ,  $p < .001$ ), temperature treatment ( $\chi^2 = 17.49$ ,  $df = 1$ ,  $p < .001$ ) and sex ( $\chi^2 = 15.90$ ,  $df = 1$ ,  $p < .001$ ), but the effect of fertilization group was not significant ( $\chi^2 = 1.04$ ,  $df = 1$ ,  $p = .308$ ). The interaction between food treatment and temperature treatment was not significant (LRT for model with and without interaction term:  $\chi^2 = 0.99$ ,  $df = 1$ ,  $p = .319$ ). In contrast to effects on smolting, the high food treatment increased the probability of maturing, as did the warm temperature treatment (Figure 4c,d). Males were less likely to mature than females in all treatments (Figure 4c,d).

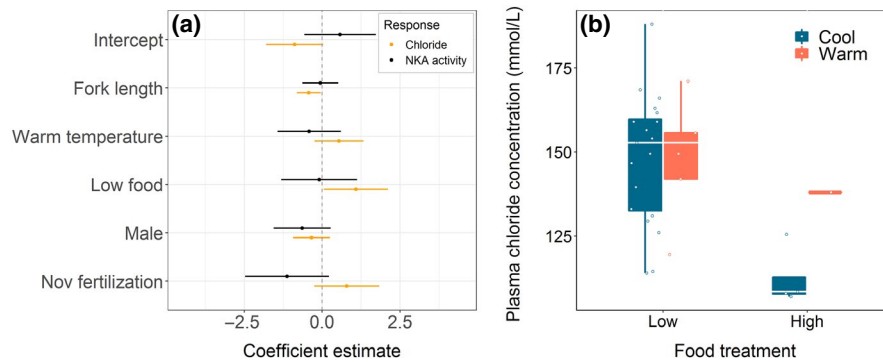
The model describing the probability of being unassigned a life history tactic included significant effects of food treatment ( $\chi^2 = 5.62$ ,  $df = 1$ ,  $p = .018$ ), temperature treatment ( $\chi^2 = 4.91$ ,  $df = 1$ ,  $p = .027$ ), sex ( $\chi^2 = 34.05$ ,  $df = 1$ ,  $p < .001$ ) and fertilization group ( $\chi^2 = 7.69$ ,  $df = 1$ ,  $p = .006$ ). The interaction between food treatment and temperature treatment was not significant (LRT for model with and without interaction term:  $\chi^2 = 3.31$ ,  $df = 1$ ,  $p = .069$ ). Fish were significantly more likely to be unassigned a life history in either the low food or cool temperature treatments, as were males, and fish from the Nov fertilization group (Table 5).

### 3.4 | Osmoregulatory performance

Gill NKA activity varied according to life history ( $\chi^2 = 56.74$ ,  $df = 2$ ,  $p < .001$ ), but was not affected by sex ( $\chi^2 = 1.28$ ,  $df = 1$ ,



**FIGURE 5** Variation in (a) gill NKA activity, and (b) plasma chloride concentration of brown trout—classed as smolts (migratory tactics) and mature (non-migratory), or unassigned a life history tactic—after 24 hr in salt water (30 ppt salinity). Size-corrected plasma chloride concentration was negatively related to Gill NKA activity in (c) smolts (dashed line = 95% confidence interval), but there was no relationship in (d) non-smolts (mature and unassigned fish)



**FIGURE 6** (a) Coefficient estimates ( $\pm 95\%$  confidence intervals) from the mixed effects models describing z-standardized gill NKA activity and plasma chloride concentration of brown trout smolts after 24 hr in salt water (30 ppt salinity). Variation in plasma chloride concentration of smolts according to food treatment is shown in (b), where the white lines in each box represent the median. Note that only one smolt was recorded in the High-Warm treatment, and thus, there is no corresponding white line for the median in the High-Warm treatment

$p = .258$ ) or fertilization group ( $\chi^2 = 0.72$ ,  $df = 1$ ,  $p = .397$ ). Post hoc testing showed smolts had significantly higher NKA activity than mature fish ( $t = -7.41$ ,  $df = 172$ ,  $p < .001$ ) and unassigned fish ( $t = 5.15$ ,  $df = 172$ ,  $p < .001$ ; Figure 5a). Similarly, plasma chloride concentration was significantly affected by life history ( $\chi^2 = 52.14$ ,  $df = 2$ ,  $p < .001$ ), with no significant effect of sex ( $\chi^2 = 2.75$ ,  $df = 1$ ,  $p = .097$ ) or fertilization group ( $\chi^2 = 2.03$ ,  $df = 1$ ,  $p = .154$ ). Smolts had significantly lower plasma chloride concentration after saltwater exposure than mature fish ( $t = 5.56$ ,  $df = 144$ ,  $p < .001$ ) and unassigned fish ( $t = -6.77$ ,  $df = 144$ ,  $p < .001$ ; see Figure 5b). Size-corrected plasma chloride concentration decreased significantly with gill NKA activity in smolts ( $\chi^2 = 14.18$ ,  $df = 1$ ,  $p < .001$ , Figure 5c); however, there was no significant relationship between size-corrected plasma chloride concentration and gill NKA activity in non-smolts ( $\chi^2 = 1.79$ ,  $df = 1$ ,  $p = .180$ , Figure 5d).

After accounting for the significant effect of body size ( $\chi^2 = 5.97$ ,  $df = 1$ ,  $p = .015$ ), the model describing plasma chloride concentration in smolts (marginal  $R^2 = .49$ ) did not retain a significant food  $\times$  temperature treatment interaction (LRT:  $\chi^2 = 0.26$ ,  $df = 1$ ,  $p = .610$ ). We detected a significant main effect of food treatment on plasma chloride concentration ( $\chi^2 = 5.29$ ,  $df = 1$ ,  $p = .021$ ), where the high food treatment was associated with lower chloride values (Figure 6a,b). There was no significant effect of temperature treatment ( $\chi^2 = 2.26$ ,  $df = 1$ ,  $p = .133$ ), sex ( $\chi^2 = 1.60$ ,  $df = 1$ ,  $p = .205$ ) or fertilization group ( $\chi^2 = 2.77$ ,  $df = 1$ ,  $p = .096$ ) on chloride concentrations. Mixed model analysis indicated non-significant effects of fork length ( $\chi^2 = 0.06$ ,  $df = 1$ ,  $p = .814$ ), food treatment ( $\chi^2 = 0.03$ ,  $df = 1$ ,  $p = .862$ ), temperature treatment ( $\chi^2 = 0.85$ ,  $df = 1$ ,  $p = .358$ ), sex ( $\chi^2 = 2.47$ ,  $df = 1$ ,  $p = .116$ ) and fertilization group ( $\chi^2 = 3.53$ ,  $df = 1$ ,  $p = .060$ ) on gill NKA activity in smolts (marginal  $R^2 = .20$ , Figure 6a). Overall, this indicates positive direct effects of food treatment (independent of size) on saltwater tolerance of smolts, which were not reflected in gill NKA activity. See Tables S6 and S7 for parameter estimates from the mixed effect models.

## 4 | DISCUSSION

Accelerating global change is exposing ecosystems to a multitude of co-occurring stressors, the implications of which are uncertain, particularly for migratory populations. Here, we showed that food restriction increased the occurrence of a migratory phenotype (smolts), but conversely, elevated temperature reduced smolting rates in favour of increased freshwater maturation (a phenotype consistent with a residency tactic). The observed effects on life history were underpinned by complex, interactive effects of these putative stressors on underlying status traits associated with migratory decisions.

### 4.1 | Effects of multiple stressors on underlying morphological traits

While stressors applied in isolation generally appeared to have negative effects on morphological traits, the effects of warming were less pronounced than food restriction, and varied depending on the response considered. Although fish at higher temperatures were smaller than their counterparts in the cool treatment, they maintained similar condition trajectories, and indeed had higher lipid stores at the end of the study, suggesting temperature may alter patterns of energy allocation in different ways to food restriction. Smaller sizes and higher lipid stores might arise if investment into gonadal development is prioritized over somatic growth earlier when environmental conditions appear favourable for early growth (i.e. the warm temperature treatments; Jonsson, Jonsson, & Finstad, 2013), supported by the high prevalence of mature fish in warm treatments. Interestingly, the cumulative effects of food restriction and temperature were less than expected, based on their effects in isolation, suggesting complex antagonistic interactions between the stressors, whereby increased temperatures reduced body size and mass at high, but not low, food levels. The dampened response to temperature when combined with food restriction could

perhaps be explained by metabolic rate depression under low food conditions, which has previously been documented in food-limited brown trout (Auer, Salin, Anderson, & Metcalfe, 2016; Auer, Salin, Rudolf, Anderson, & Metcalfe, 2015). This, together with overall reduced consumption rates, may simply have swamped any effects of temperature on growth in the low food treatments. Indeed, bioenergetics modelling of stream-dwelling rainbow trout growth has indicated growth may be more affected by factors influencing food intake rates (such as reduced overall food availability) than by direct effects of temperature, particularly during warmer summer months (Railsback & Rose, 1999).

## 4.2 | Effects of multiple stressors on migration

The antagonistic effects of food restriction and higher temperatures on physiological traits were not apparent at the level of migratory tactics. Indeed, opposing (additive) effects of these putative stressors on migratory phenotypes seemed initially to be counterintuitive. While an increase in the migratory tactic in response to food limitation is in line with previous work (Archer et al., 2019; Jones et al., 2015; O'Neal & Stanford, 2011; Olsson et al., 2006; Wysujack et al., 2009), surprisingly, a temperature increase of 1.8°C above the natural temperature regime of the source catchment reduced smolting rates. An energy limitation scenario (where an environmental stressor may act to prevent individuals from reaching genetically determined maturation thresholds) was supported in our results at the level of the status traits. Future migrants (i.e. smolts) were consistently smaller than fish that matured in fresh water (i.e. residents) and differences in mass and condition trajectories indicated migrants were energetically deficient (relative to mature fish). Energetic limitation appeared to be associated with low food availability, but less so with warmer temperatures.

Warmer temperatures have been proposed to generally increase the frequency of migrants through energetic limitation, if associated elevated metabolic demands are not offset by increased energetic intake (Kendall et al., 2014; Sloat & Reeves, 2014). However, warming can have a range of context-dependent impacts on patterns of energy acquisition and allocation in salmonines, which in turn may lead to a diversity of effects on life histories. For example, warmer temperatures are associated with higher levels of growth up until some thermal optimum (Elliott, Hurley, & Fryer, 1995; Forseth & Jonsson, 1994; Jensen, 1990; Jonsson et al., 2013; Ojanguren, Reyes-Gavilán, & Braña, 2001), but bioenergetics modelling shows that optimal temperatures for growth are negatively related to daily ration amount and body size (Beauchamp, 2009). Thus, higher temperatures could either increase or decrease average somatic growth, depending on food supply, the current distribution of fish sizes and proximity to thermal growth optima. High somatic growth, along with high body condition and lipids, has been linked to increased freshwater maturation in facultatively migratory salmonines (Dodson et al., 2013; Hecht, Hard, Thrower, & Nichols, 2015; Jonsson & Jonsson, 1993), but other studies have found that faster growing juveniles may be

more likely to migrate at earlier ages and smaller sizes because they are more energetically constrained by limited food availability (owing to much higher metabolic costs) than slower growers (Forseth, Nesje, Jonsson, & Hårsaker, 1999). Moreover, migration tendency is linked to the relative productivity of marine and freshwater habitats, with anadromy more prevalent in areas where the marine environment offers better opportunities for feeding and growth (e.g. in higher latitudes; Gross, Coleman, & McDowall, 1988). Although the temperature stressor we simulated in our study is in line with projected climate warming scenarios of 1–3°C (IPCC, 2014), our warm temperature treatment remained largely within the optimal temperature range for growth in brown trout of 13–17°C (Elliott & Hurley, 2000; Elliott et al., 1995; Ojanguren et al., 2001; maximum temperature in the warm treatments was 18.2°C). It is therefore likely that warmer temperatures did not tip most individuals into an energetic deficit; thus, fish were more likely to mature, rather than to smolt, in the warm treatments.

Bioenergetic modelling of migratory variation in steelhead trout has suggested that reductions in food resources can be mediated or exacerbated by water temperatures to alter expression of life histories (Benjamin, Connolly, Romine, & Perry, 2013). Few studies have empirically tested the cumulative effects of food supply and temperature on migratory tactics, but from our study, it appears these two environmental stressors may act additively, rather than synergistically, at least for populations that are well within their thermal limits. Moreover, the positive effect of temperature on maturation, coupled with negative temperature effects on the frequencies of smolts and unassigned fish, indicates here that warming acts to hasten the expression of life histories, driving earlier maturation instead of migration. Similar changes in life history dynamics have been predicted in partially migratory masu salmon (*O. masou*), where favourable early growth conditions associated with warming promoted maturation over migration and caused an overall decline in life history diversity (Morita, Tamate, Kuroki, & Nagasawa, 2014).

Antagonistic effects of temperature and food on physiological traits (presumed to underpin migratory decisions) were not translated at the level of migratory tactics (where the putative stressors combined additively). Our results provide additional evidence that multiple stressors can alter ecological responses in unexpected ways, sometimes termed 'ecological surprises' (Paine, Tegner, & Johnson, 1998). This suggests that effects of stressors can vary depending on the level of organization, or indeed the response, that is measured (Galic et al., 2018). It also underscores how environmental factors may affect migratory decisions directly, and not solely through environmentally induced changes in putative cueing traits. For example, temperature can affect gene expression with long-lasting consequences for future behaviour and life history (Jonsson & Jonsson, 2019). There is some evidence to support that warming, in particular, can directly alter life history tactics, for example, temperature hastened maturation at smaller sizes in nine-spined sticklebacks (*Pungitius pungitius*) independently of temperature-mediated growth (Kuparinen et al., 2011). Changes in somatic growth or energy allocation due to antagonistic effects of stressors therefore



adds an additional layer of complexity to our ability to infer future migratory tactics from patterns of juvenile growth.

### 4.3 | Early life conditions affect migration propensity

The effects of fertilization group on migratory propensity were an unexpected outcome of our study. While the relatively small numbers of brood stock used makes it difficult to draw conclusions regarding differences between fertilization groups, which most likely stem from inherited genetic effects or epigenetic/parental effects, differences might nonetheless reflect non-inherited variation arising from early-life environment that has knock-on effects for future phenotype (Burton & Metcalfe, 2014). Moreover, differences in the timing of readiness for reproduction/fertilization also indicates differences among brood stock (e.g. spawning site in the wild) that may have translated into genetic or parental effects, rather than an effect of fertilization date per se. Although both fertilization groups experienced the same food restriction and temperature treatments, phenotypic differences that were established before the application of treatments continued throughout the experimental phase of the study (e.g. fish from the Nov fertilization group, whilst larger, tended to be in poorer condition), supporting genetic/parental effects as factors which may be equally as important as downstream environmental conditions. Interestingly, individuals in the earlier fertilization group were more likely to be classed as 'unassigned' by the end of the study. Delayed phenotypic expression of migratory tactics can be reconciled with the existence of multiple decision windows, where an initial window determines the overall migration versus residency decision but then subsequent windows determine the actual age at which migrants become smolts, and residents mature (Ferguson et al., 2019). Age at smolting, and age at maturation, may involve similar threshold mechanisms as the overarching migration decision but perhaps with different status traits playing the role of 'trigger'; for example, size or growth rates may determine age at smolting in Atlantic salmon but lipid levels may determine age at first maturation (Jonsson & Jonsson, 1993, 2005; Rowe, Thorpe, & Shanks, 1991). Complex environmental stressor effects on these various cues could then increase or decrease overall life history diversity through temporal variation in migration or maturation patterns. In the Erriff system from which our brood stock was obtained, seaward-migration of wild fish is typically undertaken by smolts 2 or 3 years after hatching (Gargan et al., 2016), with potentially up to half of smolts migrating at age 3+. Similarly, although the age distribution of mature residents is unknown for the Erriff system, maturation at ages of 3+ and older is likely. As such, the patterns we observed might have reflected stressor effects on age at migration or age at maturity, in addition to effects on tactic choice per se. At least in relation to food restriction, we have no reason to expect that the increased smolting rates we observed

in our low food treatments at age 2+ would have been counterbalanced by increased maturation rates at age 3+ of the remaining unassigned fish; if anything, these were likely to have been simply delaying actual smolting until an older age, and therefore larger size (given that larger smolts are more likely to survive the critical transition to the marine environment). In other words, smolting rate differences measured across ages 2+ and 3+ combined, if the experiment had been continued for an additional year, were likely to have been even more pronounced between food treatments. It is less obvious whether the same can be said for temperature effects, but we have no a priori reason to expect that age 3+ smolting rates would respond in the opposite direction to sustained higher temperatures than age 2+ smolting rates.

### 4.4 | Stressor effects on future migratory capacity

A final aim of our study was to assess if exposure to multiple stressors influenced the capacity of migratory individuals to successfully transition to sea water (an indicator of future migratory success). Smolts generally showed heightened hypo-osmoregulatory performance relative to non-smolts (for a given fish size as indexed by reduced plasma chloride levels following seawater exposure), which was associated with increased  $\text{Na}^+$ ,  $\text{K}^+$ -ATPase activity, a key enzyme involved in ion regulation. This is in agreement with many previous studies in salmonines that have described high NKA activity in smolts, which is related directly to ability to maintain homeostasis in seawater (McCormick, Regish, Christensen, & Björnsson, 2013; Nilsen et al., 2007). We had expected the addition of stressors might further influence the hypo-osmoregulatory performance of smolts through negative effects on size, irrespective of enzyme activity, and indeed, we did detect a size dependency in plasma chloride levels, which was not reflected in gill NKA activity. Size-dependent increases in salinity tolerance that are independent of the size-dependent smolt decision have also been previously established for salmonines (McCormick et al., 1998). Thus, though the overall frequency of smolting was lower in optimal growth conditions (i.e. high food regimes in our study), the small number of smolts that were produced under these good growing conditions were larger and in better condition than their counterparts exposed to less favourable conditions. Intriguingly, we detected an additional negative effect of food restriction on hypo-osmoregulatory performance that was independent of size. Food limitation could potentially contribute to competitive interactions between individuals, emergence of dominance hierarchies and generally heightened physiological stress, with implications for seawater tolerance and survival of brown trout (Liebert & Schreck, 2006; Midwood et al., 2014; Pickering, 1989; Sigholt & Finstad, 1990). Collectively, these results suggest that food deprivation may act as a stressor to migrants, which may have negative impacts for survival at sea (Ward & Slaney, 1988), and possibly reduce the overall fitness of the migratory life history.

## 4.5 | Implications and considerations

Considerable uncertainty still surrounds how environment and genetics integrate, via mediating physiological traits, to influence complex life history patterns of facultatively migratory species (Crozier et al., 2008). Here, we focused on two stressors that are likely to occur in synchrony based on projections of global change, with important implications for an experimentally reared population of trout that can be extrapolated to wild populations, though some caveats should be noted. Whilst macroinvertebrate abundance and size are indeed projected to shrink with rising temperatures across the range of brown trout distribution (Durance & Ormerod, 2007), in natural systems trout have been shown to track shifts in prey community assemblies (Woodward et al., 2010) or even become more selective in diet as temperatures increase (O'Gorman et al., 2016). Furthermore, given that our study population originated from a relatively cool catchment, it is possible that temperature increases in similar systems will primarily serve to increase fish growth/energetic status and promote residency, although this very much depends on how other key factors such as food supply, flow rates and biotic factors also respond to climate change. Any reductions in anadromy would likely alter the transfer of nutrients between freshwater and marine systems, with consequences for wider ecosystem processes (Doughty et al., 2016). If warming results in overall decreases in life history diversity within populations (e.g. Benjamin et al., 2013; Morita et al., 2014) that are coherent over broad spatial scales, this could lead to a reduction in the 'portfolio effect' in salmonines, whereby maintaining a range of phenotypic diversity buffers aggregations of populations and even entire species from changing environmental conditions (Schindler, Armstrong, & Reed, 2015).

Expanding our approach to additional populations, including those that are closer to their thermal limits, for example, in southern Europe, may alter the patterns we observed here (Almodóvar, Nicola, Ayllón, & Elvira, 2012). There is some evidence for genotype by temperature interactions in key phenotypic traits in salmonines (Doctor, Berejikian, Hard, & VanDoornik, 2014), but the role of intrinsic factors relative to environmental context requires further exploration (Ferguson, Reed, McGinnity, & Prodöhl, 2017). Common garden or reciprocal transplant style experiments in the wild would help to elucidate the mechanisms underpinning responses to multiple stressors in migratory species, whilst also incorporating the complexities of natural systems, such as changes in prey community structure, or abiotic correlates of warming (e.g. reduced oxygen/flow; Clews, Durance, Vaughan, & Ormerod, 2010). Nevertheless, our study has important implications for the development of management strategies to conserve facultatively migratory salmonines, a culturally iconic group in global decline due to aquaculture expansion, habitat degradation and climate change (Costello, 2009; Limburg & Waldman, 2009).

## ACKNOWLEDGEMENTS

The authors would like to thank Brian Clarke, Deirdre Cotter, members of the FishEyE team at UCC, and the staff of Inland Fisheries Ireland and the Marine Institute for obtaining brood stock and for assistance in fish rearing, along with Robert Wynne, Ronan O'Sullivan, Peter Moran and Adam Kane for assistance in fish husbandry. This research was supported by an ERC Starting Grant (639192-ALH) and an SFI ERC Support Award awarded to TER. PMcG was supported in part by grants from Science Foundation Ireland (15/IA/3028 & 16/BBSRC/3316) and by grant-in-aid (RESPI/FS/16/01) from the Marine Institute (Ireland) as part of the Marine Research Programme by the Irish Government. We thank Dan Hall for his assistance in running the NKA activity assay and Jamie Coughlan for genotyping work. Adam Kane and Darío Fernández-Bellón provided useful comments on an earlier version of this manuscript. We thank Neil Metcalfe and an anonymous reviewer for comments that improved this work. Any use of product or firm names is for descriptive purposes only and does not imply endorsement by the U.S. Government.

## AUTHOR CONTRIBUTIONS

LA, TR and PMG conceived the study. LA, SH, PG and LH collected data and contributed to experimental design. LA conducted statistical analysis and led the manuscript writing. All authors contributed to interpretation of results and revisions of the manuscript.

## DATA AVAILABILITY STATEMENT

The data that support the findings of this study are available from the corresponding author upon reasonable request.

## ORCID

Louise C. Archer  <https://orcid.org/0000-0002-1983-3825>

## REFERENCES

- Almodóvar, A., Nicola, G. G., Ayllón, D., & Elvira, B. (2012). Global warming threatens the persistence of Mediterranean brown trout. *Global Change Biology*, 18(5), 1549–1560. <https://doi.org/10.1111/j.1365-2486.2011.02608.x>
- Archer, L. C., Hutton, S. A., Harman, L., O'Grady, M. N., Kerry, J. P., Poole, W. R., ... Reed, T. E. (2019). The interplay between extrinsic and intrinsic factors in determining migration decisions in brown trout (*Salmo trutta*): An experimental study. *Frontiers in Ecology and Evolution*, 7, 222. <https://doi.org/10.3389/fevo.2019.00222>
- Auer, S. K., Salin, K., Anderson, G. J., & Metcalfe, N. B. (2016). Flexibility in metabolic rate and activity level determines individual variation in overwinter performance. *Oecologia*, 182(3), 703–712. <https://doi.org/10.1007/s00442-016-3697-z>
- Auer, S. K., Salin, K., Rudolf, A. M., Anderson, G. J., & Metcalfe, N. B. (2015). Flexibility in metabolic rate confers a growth advantage under changing food availability. *Journal of Animal Ecology*, 84(5), 1405–1411. <https://doi.org/10.1111/1365-2656.12384>
- Ball, J. P., Nordengren, C., & Wallin, K. (2001). Partial migration by large ungulates: Characteristics of seasonal moose *Alces alces* ranges in northern Sweden. *Wildlife Biology*, 7(3), 39–47. <https://doi.org/10.2981/wlb.2001.007>
- Barton, K. (2019). MuMIn: Multi-model inference. R package version, 1.43.6. Retrieved from <https://CRAN.R-project.org/package=MuMIn>

- Beauchamp, D. A. (2009). Bioenergetic ontogeny: Linking climate and mass-specific feeding to life-cycle growth and survival of salmon. *American Fisheries Society Symposium*, 70, 1–19.
- Benjamin, J. R., Connolly, P. J., Romine, J. G., & Perry, R. W. (2013). Potential effects of changes in temperature and food resources on life history trajectories of juvenile *Oncorhynchus mykiss*. *Transactions of the American Fisheries Society*, 142(1), 208–220. <https://doi.org/10.1080/00028487.2012.728162>
- Berthold, P., & Querner, U. (1982). Partial migration in birds: Experimental proof of polymorphism as a controlling system. *Experientia*, 38(7), 805–806. <https://doi.org/10.1007/BF01972282>
- Bolger, T., & Connolly, P. L. (1989). The selection of suitable indices for the measurement and analysis of fish condition. *Journal of Fish Biology*, 34(2), 171–182. <https://doi.org/10.1111/j.1095-8649.1989.tb03300.x>
- Breitburg, D. L., Baxter, J. W., Hatfield, C. A., Howarth, R. W., Jones, C. G., Lovett, G. M., & Wigand, C. (1998). Understanding effects of multiple stressors: Ideas and challenges. In I. M. L. Pace & P. M. Groffman (Eds.), *Successes, limitations, and frontiers in ecosystem science* (pp. 416–431). New York: Springer. [https://doi.org/10.1007/978-1-4612-1724-4\\_17](https://doi.org/10.1007/978-1-4612-1724-4_17)
- Breitburg, D. L., Sanders, J. G., Gilmour, C. C., Hatfield, C. A., Osman, R. W., Riedel, G. F., ... Seitzinger, S. P. (1999). Variability in responses to nutrients and trace elements, and transmission of stressor effects through an estuarine food web. *Limnology and Oceanography*, 44(3part2), 837–863. [https://doi.org/10.4319/lo.1999.44.3\\_part\\_2.0837](https://doi.org/10.4319/lo.1999.44.3_part_2.0837)
- Buoro, M., Gimenez, O., & Prévost, E. (2012). Assessing adaptive phenotypic plasticity by means of conditional strategies from empirical data: The latent environmental threshold model. *Evolution*, 66(4), 996–1009. <https://doi.org/10.1111/j.1558-5646.2011.01484.x>
- Burton, T., & Metcalfe, N. B. (2014). Can environmental conditions experienced in early life influence future generations? *Proceedings of the Royal Society of London B: Biological Sciences*, 281(1785), 20140311. <https://doi.org/10.1098/rspb.2014.0311>
- Byrne, M., & Przeslawski, R. (2013). Multistressor impacts of warming and acidification of the ocean on marine invertebrates' life histories. *Integrative and Comparative Biology*, 53(4), 582–596. <https://doi.org/10.1093/icb/ict049>
- Cagnacci, F., Focardi, S., Heurich, M., Stache, A., Hewison, A. J. M., Morellet, N., ... Urbano, F. (2011). Partial migration in roe deer: Migratory and resident tactics are end points of a behavioural gradient determined by ecological factors. *Oikos*, 120(12), 1790–1802. <https://doi.org/10.1111/j.1600-0706.2011.19441.x>
- Chapman, B. B., Brönmark, C., Nilsson, J.-Å., & Hansson, L.-A. (2011). The ecology and evolution of partial migration. *Oikos*, 120(12), 1764–1775. <https://doi.org/10.1111/j.1600-0706.2011.20131.x>
- Chapman, B. B., Hulthén, K., Brodersen, J., Nilsson, P. A., Skov, C., Hansson, L.-A., & Brönmark, C. (2012). Partial migration in fishes: Causes and consequences. *Journal of Fish Biology*, 81(2), 456–478. <https://doi.org/10.1111/j.1095-8649.2012.03342.x>
- Clarke, W. C. (1982). Evaluation of the seawater challenge test as an index of marine survival. *Aquaculture*, 28(1), 177–183. [https://doi.org/10.1016/0044-8486\(82\)90020-5](https://doi.org/10.1016/0044-8486(82)90020-5)
- Clews, E., Durance, I., Vaughan, I. P., & Ormerod, S. J. (2010). Juvenile salmonid populations in a temperate river system track synoptic trends in climate. *Global Change Biology*, 16(12), 3271–3283. <https://doi.org/10.1111/j.1365-2486.2010.02211.x>
- Costello, M. J. (2009). How sea lice from salmon farms may cause wild salmonid declines in Europe and North America and be a threat to fishes elsewhere. *Proceedings of the Royal Society B: Biological Sciences*, 276(1672), 3385–3394. <https://doi.org/10.1098/rspb.2009.0771>
- Côté, I. M., Darling, E. S., & Brown, C. J. (2016). Interactions among ecosystem stressors and their importance in conservation. *Proceedings of the Royal Society B: Biological Sciences*, 283(1824), 20152592. <https://doi.org/10.1098/rspb.2015.2592>
- Crain, C. M., Kroeker, K., & Halpern, B. S. (2008). Interactive and cumulative effects of multiple human stressors in marine systems. *Ecology Letters*, 11(12), 1304–1315. <https://doi.org/10.1111/j.1461-0248.2008.01253.x>
- Crozier, L. G., Hendry, A. P., Lawson, P. W., Quinn, T. P., Mantua, N. J., Battin, J., ... Huey, R. B. (2008). Potential responses to climate change in organisms with complex life histories: Evolution and plasticity in Pacific salmon. *Evolutionary Applications*, 1(2), 252–270. <https://doi.org/10.1111/j.1752-4571.2008.00033.x>
- Davidson, J. G., Daverdin, M., Sjørusen, A. D., Rønning, L., Arnekleiv, J. V., & Koksvik, J. I. (2014). Does reduced feeding prior to release improve the marine migration of hatchery brown trout *Salmo trutta* smolts? *Journal of Fish Biology*, 85(6), 1992–2002. <https://doi.org/10.1111/jfb.12485>
- de Eyto, E., Dalton, C., Dillane, M., Jennings, E., McGinness, P., O'Dwyer, B., ... Taylor, D. (2016). The response of North Atlantic diadromous fish to multiple stressors, including land use change: A multidecadal study. *Canadian Journal of Fisheries and Aquatic Sciences*, 73(12), 1759–1769. <https://doi.org/10.1139/cjfas-2015-0450>
- Dębowski, P., & Dobosz, S. (2016). Influence of parental life history on maturation and smoltification in brown trout (*Salmo trutta* L.). *Archives of Polish Fisheries*, 24(4), 177–186. <https://doi.org/10.1515/aopf-2016-0015>
- del Villar-Guerra, D., Larsen, M. H., Baktoft, H., Koed, A., & Aarestrup, K. (2019). The influence of initial developmental status on the life-history of sea trout (*Salmo trutta*). *Scientific Reports*, 9(1), 1–13. <https://doi.org/10.1038/s41598-019-49175-0>
- Dell, A. I., Pawar, S., & Savage, V. M. (2011). Systematic variation in the temperature dependence of physiological and ecological traits. *Proceedings of the National Academy of Sciences of the United States of America*, 108(26), 10591–10596. <https://doi.org/10.1073/pnas.1015178108>
- Dellefors, C., & Faremo, U. (1988). Early sexual maturation in males of wild sea trout, *Salmo trutta* L., inhibits smoltification. *Journal of Fish Biology*, 33(5), 741–749. <https://doi.org/10.1111/j.1095-8649.1988.tb05519.x>
- Doctor, K., Berejikian, B., Hard, J. J., & VanDoornik, D. (2014). Growth-mediated life history traits of steelhead reveal phenotypic divergence and plastic response to temperature. *Transactions of the American Fisheries Society*, 143(2), 317–333. <https://doi.org/10.1080/00028487.2013.849617>
- Dodson, J. J., Aubin-Horth, N., Thériault, V., & Páez, D. J. (2013). The evolutionary ecology of alternative migratory tactics in salmonid fishes: Alternative migratory tactics as threshold traits. *Biological Reviews*, 88(3), 602–625. <https://doi.org/10.1111/brv.12019>
- Doswald, N., Willis, S. G., Collingham, Y. C., Pain, D. J., Green, R. E., & Huntley, B. (2009). Potential impacts of climatic change on the breeding and non-breeding ranges and migration distance of European Sylvia warblers. *Journal of Biogeography*, 36(6), 1194–1208. <https://doi.org/10.1111/j.1365-2699.2009.02086.x>
- Doughty, C. E., Roman, J., Faurby, S., Wolf, A., Haque, A., Bakker, E. S., ... Svenning, J.-C. (2016). Global nutrient transport in a world of giants. *Proceedings of the National Academy of Sciences of the United States of America*, 113(4), 868–873. <https://doi.org/10.1073/pnas.1502549112>
- Durance, I., & Ormerod, S. J. (2007). Climate change effects on upland stream macroinvertebrates over a 25-year period. *Global Change Biology*, 13(5), 942–957. <https://doi.org/10.1111/j.1365-2486.2007.01340.x>
- Elliott, J. M., & Elliott, J. A. (2010). Temperature requirements of Atlantic salmon *Salmo salar*, brown trout *Salmo trutta* and Arctic charr *Salvelinus alpinus*: Predicting the effects of

- climate change. *Journal of Fish Biology*, 77(8), 1793–1817. <https://doi.org/10.1111/j.1095-8649.2010.02762.x>
- Elliott, J. M., & Hurley, M. A. (2000). Daily energy intake and growth of piscivorous brown trout, *Salmo trutta*. *Freshwater Biology*, 44(2), 237–245. <https://doi.org/10.1046/j.1365-2427.2000.00560.x>
- Elliott, J. M., Hurley, M. A., & Fryer, R. J. (1995). A new, improved growth model for brown trout, *Salmo trutta*. *Functional Ecology*, 9(2), 290–298. <https://doi.org/10.2307/2390576>
- Ferguson, A., Reed, T. E., Cross, T. F., McGinnity, P., & Prodöhl, P. A. (2019). Anadromy, potamodromy and residency in brown trout *Salmo trutta*: The role of genes and the environment. *Journal of Fish Biology*, 95(3), 692–718. <https://doi.org/10.1111/jfb.14005>
- Ferguson, A., Reed, T. E., McGinnity, P., & Prodöhl, P. (2017). Anadromy in brown trout (*Salmo trutta*): A review of the relative roles of genes and environmental factors and the implications for management and conservation. In G. Harris (Ed.), *Sea trout: Science and management—Proceedings of the 2nd international sea trout symposium* (pp. 1–41). Leicestershire, UK: Matador. Retrieved from [https://www.researchgate.net/publication/297403459\\_Anadromy\\_in\\_brown\\_trout\\_Salmo\\_trutta\\_A\\_review\\_of\\_the\\_relative\\_roles\\_of\\_genes\\_and\\_environmental\\_factors\\_and\\_the\\_implications\\_for\\_management\\_and\\_conservation](https://www.researchgate.net/publication/297403459_Anadromy_in_brown_trout_Salmo_trutta_A_review_of_the_relative_roles_of_genes_and_environmental_factors_and_the_implications_for_management_and_conservation)
- Finstad, B., & Ugedal, O. (1998). Smolting of sea trout *Salmo trutta* L. in northern Norway. *Aquaculture*, 168, 341–349.
- Folt, C. L., Chen, C. Y., Moore, M. V., & Burnaford, J. (1999). Synergism and antagonism among multiple stressors. *Limnology and Oceanography*, 44(3part2), 864–877. [https://doi.org/10.4319/lo.1999.44.3\\_part\\_2.0864](https://doi.org/10.4319/lo.1999.44.3_part_2.0864)
- Forseth, T., & Jonsson, B. (1994). The growth and good ration of piscivorous brown trout (*Salmo trutta*). *Functional Ecology*, 8(2), 171–177. <https://doi.org/10.2307/2389900>
- Forseth, T., Larsson, S., Jensen, A. J., Jonsson, B., Näslund, I., & Berglund, I. (2009). Thermal growth performance of juvenile brown trout *Salmo trutta*: No support for thermal adaptation hypotheses. *Journal of Fish Biology*, 74(1), 133–149. <https://doi.org/10.1111/j.1095-8649.2008.02119.x>
- Forseth, T., Nesje, T. F., Jonsson, B., & Hårsaker, K. (1999). Juvenile migration in brown trout: A consequence of energetic state. *Journal of Animal Ecology*, 68(4), 783–793. <https://doi.org/10.1046/j.1365-2656.1999.00329.x>
- Fussmann, K. E., Schwarzmüller, F., Brose, U., Jousset, A., & Rall, B. C. (2014). Ecological stability in response to warming. *Nature Climate Change*, 4(3), 206–210. <https://doi.org/10.1038/nclimate2134>
- Galic, N., Sullivan, L. L., Grimm, V., & Forbes, V. E. (2018). When things don't add up: Quantifying impacts of multiple stressors from individual metabolism to ecosystem processing. *Ecology Letters*, 21(4), 568–577. <https://doi.org/10.1111/ele.12923>
- Gargan, P., Kelly, F., Shephard, S., & Whelan, K. (2016). Temporal variation in sea trout *Salmo trutta* life history traits in the Erriff River, western Ireland. *Aquaculture Environment Interactions*, 8, 675–689. <https://doi.org/10.3354/aei00211>
- Gillooly, J. F., Brown, J. H., West, G. B., Savage, V. M., & Charnov, E. L. (2001). Effects of size and temperature on metabolic rate. *Science*, 293(5538), 2248–2251. <https://doi.org/10.1126/science.1061967>
- Gross, M. R., Coleman, R. M., & McDowall, R. M. (1988). Aquatic productivity and the evolution of diadromous fish migration. *Science*, 239(4845), 1291–1293. <https://doi.org/10.1126/science.239.4845.1291>
- Hansson, L.-A., & Hylander, S. (2009). Size-structured risk assessments govern *Daphnia* migration. *Proceedings of the Royal Society B: Biological Sciences*, 276(1655), 331–336. <https://doi.org/10.1098/rspb.2008.1088>
- Hard, J. J., Winans, G. A., & Richardson, J. C. (1999). Phenotypic and genetic architecture of juvenile morphometry in Chinook salmon. *Journal of Heredity*, 90(6), 597–606. <https://doi.org/10.1093/jhered/90.6.597>
- Hari, R. E., Livingstone, D. M., Siber, R., Burkhardt-Holm, P., & Güttinger, H. (2006). Consequences of climatic change for water temperature and brown trout populations in Alpine rivers and streams. *Global Change Biology*, 12(1), 10–26. <https://doi.org/10.1111/j.1365-2486.2005.001051.x>
- Harvey, B. P., Gwynn-Jones, D., & Moore, P. J. (2013). Meta-analysis reveals complex marine biological responses to the interactive effects of ocean acidification and warming. *Ecology and Evolution*, 3(4), 1016–1030. <https://doi.org/10.1002/ece3.516>
- Hebblewhite, M., & Merrill, E. H. (2011). Demographic balancing of migrant and resident elk in a partially migratory population through forage–predation tradeoffs. *Oikos*, 120(12), 1860–1870. <https://doi.org/10.1111/j.1600-0706.2011.19436.x>
- Hecht, B. C., Hard, J. J., Thrower, F. P., & Nichols, K. M. (2015). Quantitative genetics of migration-related traits in rainbow and steelhead trout. *G3: Genes, Genomes, Genetics*, 5(5), 873–889. <https://doi.org/10.1534/g3.114.016469>
- Huey, R. B., & Stevenson, R. D. (1979). Integrating thermal physiology and ecology of ectotherms: A discussion of approaches. *Integrative and Comparative Biology*, 19(1), 357–366. <https://doi.org/10.1093/icb/19.1.357>
- IPCC. (2014). *Climate change 2014: Synthesis report. Contribution of working groups I, II and III to the fifth assessment report of the Intergovernmental Panel on Climate Change*. Core Writing Team, R. K. Pachauri, & L. A. Meyer (Eds.). 151 pp. Retrieved from <https://www.ipcc.ch/report/ar5/syr/>
- Jackson, M. C., Loewen, C. J. G., Vinebrooke, R. D., & Chimimba, C. T. (2016). Net effects of multiple stressors in freshwater ecosystems: A meta-analysis. *Global Change Biology*, 22(1), 180–189. <https://doi.org/10.1111/gcb.13028>
- Jensen, A. J. (1990). Growth of young migratory brown trout *Salmo trutta* correlated with water temperature in Norwegian rivers. *The Journal of Animal Ecology*, 59(2), 603–614. <https://doi.org/10.2307/4883>
- Jones, D. A., Bergman, E., & Greenberg, L. (2015). Food availability in spring affects smolting in brown trout (*Salmo trutta*). *Canadian Journal of Fisheries and Aquatic Sciences*, 72(11), 1694–1699. <https://doi.org/10.1139/cjfas-2015-0106>
- Jonsson, B. (1985). Life history patterns of freshwater resident and sea-run migrant brown trout in Norway. *Transactions of the American Fisheries Society*, 114(2), 182–194. [https://doi.org/10.1577/1548-8659\(1985\)114<182:LHPOFR>2.0.CO;2](https://doi.org/10.1577/1548-8659(1985)114<182:LHPOFR>2.0.CO;2)
- Jonsson, B., & Jonsson, N. (1993). Partial migration: Niche shift versus sexual maturation in fishes. *Reviews in Fish Biology and Fisheries*, 3(4), 348–365. <https://doi.org/10.1007/BF00043384>
- Jonsson, B., & Jonsson, N. (2005). Lipid energy reserves influence life-history decision of Atlantic salmon (*Salmo salar*) and brown trout (*S. trutta*) in fresh water. *Ecology of Freshwater Fish*, 14(3), 296–301. <https://doi.org/10.1111/j.1600-0633.2005.00098.x>
- Jonsson, B., & Jonsson, N. (2009). A review of the likely effects of climate change on anadromous Atlantic salmon *Salmo salar* and brown trout *Salmo trutta*, with particular reference to water temperature and flow. *Journal of Fish Biology*, 75(10), 2381–2447. <https://doi.org/10.1111/j.1095-8649.2009.02380.x>
- Jonsson, B., & Jonsson, N. (2019). Phenotypic plasticity and epigenetics of fish: Embryo temperature affects later-developing life-history traits. *Aquatic Biology*, 28, 21–32. <https://doi.org/10.3354/ab00707>
- Jonsson, B., Jonsson, N., & Finstad, A. G. (2013). Effects of temperature and food quality on age and size at maturity in ectotherms: An experimental test with Atlantic salmon. *Journal of Animal Ecology*, 82(1), 201–210. <https://doi.org/10.1111/j.1365-2656.2012.02022.x>
- Kaitala, A., Kaitala, V., & Lundberg, P. (1993). A theory of partial migration. *The American Naturalist*, 142(1), 59–81. <https://doi.org/10.1086/285529>



- Keeton, J. T., Hafley, B. S., Eddy, S. M., Moser, C. R., McManus, B. J., & Leffler, T. P. (2003). November). Rapid Determination of Moisture and Fat in Meats by Microwave and Nuclear Magnetic Resonance Analysis. *Journal of AOAC International*, 86(6), 1193–1202.
- Kendall, N. W., McMillan, J. R., Sloat, M. R., Buehrens, T. W., Quinn, T. P., Pess, G. R., ... Zabel, R. W. (2014). Anadromy and residency in steelhead and rainbow trout (*Oncorhynchus mykiss*): A review of the processes and patterns. *Canadian Journal of Fisheries and Aquatic Sciences*, 72(3), 319–342. <https://doi.org/10.1139/cjfas-2014-0192>
- Klemetsen, A., Amundsen, P.-A., Dempson, J. B., Jonsson, B., Jonsson, N., O'Connell, M. F., & Mortensen, E. (2003). Atlantic salmon *Salmo salar* L., brown trout *Salmo trutta* L. and Arctic charr *Salvelinus alpinus* (L.): A review of aspects of their life histories. *Ecology of Freshwater Fish*, 12(1), 1–59. <https://doi.org/10.1034/j.1600-0633.2003.00010.x>
- Kovach, R. P., Muhlfeld, C. C., Al-Chokhachy, R., Dunham, J. B., Letcher, B. H., & Kershner, J. L. (2016). Impacts of climatic variation on trout: A global synthesis and path forward. *Reviews in Fish Biology and Fisheries*, 26(2), 135–151. <https://doi.org/10.1007/s11160-015-9414-x>
- Kuparinen, A., Cano, J. M., Loehr, J., Herczeg, G., Gonda, A., & Merilä, J. (2011). Fish age at maturation is influenced by temperature independently of growth. *Oecologia*, 167(2), 435–443. <https://doi.org/10.1007/s00442-011-1989-x>
- Lack, D. (1943). The problem of partial migration. *British Birds*, 37, 122–130.
- Lenth, R. (2019). Emmeans: Estimated marginal means, aka least-squares means. R package version 1.3.5.1. Retrieved from <https://CRAN.R-project.org/package=emmeans>
- Liebert, A. M., & Schreck, C. B. (2006). Effects of acute stress on osmoregulation, feed intake, IGF-1, and cortisol in yearling steelhead trout (*Oncorhynchus mykiss*) during seawater adaptation. *General and Comparative Endocrinology*, 148(2), 195–202. <https://doi.org/10.1016/j.ygcen.2006.03.002>
- Limburg, K. E., & Waldman, J. R. (2009). Dramatic declines in north Atlantic diadromous fishes. *BioScience*, 59(11), 955–965. <https://doi.org/10.1525/bio.2009.59.11.7>
- Lundberg, P. (1987). Partial bird migration and evolutionarily stable strategies. *Journal of Theoretical Biology*, 125(3), 351–360. [https://doi.org/10.1016/S0022-5193\(87\)80067-X](https://doi.org/10.1016/S0022-5193(87)80067-X)
- Lundberg, P. (1988). The evolution of partial migration in birds. *Trends in Ecology & Evolution*, 3(7), 172–175. [https://doi.org/10.1016/0169-5347\(88\)90035-3](https://doi.org/10.1016/0169-5347(88)90035-3)
- McCormick, S. D. (2012). 5—Smolt physiology and endocrinology. In S. D. McCormick, A. P. Farrell, & C. J. Brauner (Eds.), *Fish physiology* (Vol. 32, pp. 199–251). Cambridge, MA: Academic Press. <https://doi.org/10.1016/B978-0-12-396951-4.00005-0>
- McCormick, S. D., Hansen, L. P., Quinn, T. P., & Saunders, R. L. (1998). Movement, migration, and smolting of Atlantic salmon (*Salmo salar*). *Canadian Journal of Fisheries and Aquatic Sciences*, 55(S1), 77–92. <https://doi.org/10.1139/d98-011>
- McCormick, S. D., Lerner, D. T., Monette, M. Y., Nieves-Puigdollé, K., Kelly, J. T., & Björnsson, B. T. (2009). Taking it with you when you go: How perturbations to the freshwater environment, including temperature, dams, and contaminants, affect marine survival of salmon. In A. Haro, K. L. Smith, R. A. Rulifson, C. M. Moffitt, R. J. Klauda, M. J. Dadswell, ... T. S. Avery (Eds.), *Challenges for diadromous fishes in a dynamic global environment. American fisheries society symposium* (Vol. 69, pp. 195–214). Bethesda, MD: American Fisheries Society.
- McCormick, S. D., Regish, A. M., & Christensen, A. K. (2009). Distinct freshwater and seawater isoforms of Na<sup>+</sup>/K<sup>+</sup>-ATPase in gill chloride cells of Atlantic salmon. *Journal of Experimental Biology*, 212(24), 3994–4001. <https://doi.org/10.1242/jeb.037275>
- McCormick, S. D., Regish, A. M., Christensen, A. K., & Björnsson, B. T. (2013). Differential regulation of sodium-potassium pump isoforms during smolt development and seawater exposure of Atlantic salmon. *Journal of Experimental Biology*, 216(7), 1142–1151. <https://doi.org/10.1242/jeb.080440>
- McGinnity, P., Jennings, E., deEyto, E., Allott, N., Samuelsson, P., Rogan, G., ... Cross, T. (2009). Impact of naturally spawning captive-bred Atlantic salmon on wild populations: Depressed recruitment and increased risk of climate-mediated extinction. *Proceedings of the Royal Society B: Biological Sciences*, 276(1673), 3601–3610. <https://doi.org/10.1098/rspb.2009.0799>
- Metcalfe, N. B. (1998). The interaction between behavior and physiology in determining life history patterns in Atlantic salmon (*Salmo salar*). *Canadian Journal of Fisheries and Aquatic Sciences*, 55(S1), 93–103. <https://doi.org/10.1139/d98-005>
- Midwood, J., Larsen, M., Boel, M., Jepsen, N., Aarestrup, K., & Cooke, S. (2014). Does cortisol manipulation influence outmigration behaviour, survival and growth of sea trout? A field test of carryover effects in wild fish. *Marine Ecology Progress Series*, 496, 135–144. <https://doi.org/10.3354/meps10524>
- Morita, K., Tamate, T., Kuroki, M., & Nagasawa, T. (2014). Temperature-dependent variation in alternative migratory tactics and its implications for fitness and population dynamics in a salmonid fish. *Journal of Animal Ecology*, 83(6), 1268–1278. <https://doi.org/10.1111/1365-2656.12240>
- Nevoux, M., Finstad, B., Davidsen, J. G., Finlay, R., Josset, Q., Poole, R., ... Jonsson, B. (2019). Environmental influences on life history strategies in partially anadromous brown trout (*Salmo trutta*, Salmonidae). *Fish and Fisheries*, 20, 1051–1082. <https://doi.org/10.1111/faf.12396>
- Newton, I. (2008). *The migration ecology of birds*. Cambridge, MA: Academic Press.
- Nielsen, D., Hyldig, G., Nielsen, J., & Nielsen, H. H. (2005). Lipid content in herring (*Clupea harengus* L.)—Influence of biological factors and comparison of different methods of analyses: Solvent extraction, Fatmeter, NIR and NMR. *LWT - Food Science and Technology*, 38(5), 537–548. <https://doi.org/10.1016/j.lwt.2004.07.010>
- Nilsen, T. O., Ebbesson, L. O. E., Madsen, S. S., McCormick, S. D., Andersson, E., Björnsson, B. T., ... Stefansson, S. O. (2007). Differential expression of gill Na<sup>+</sup>, K<sup>+</sup>-ATPase $\alpha$ -And  $\beta$ -subunits, Na<sup>+</sup>, K<sup>+</sup>, 2Cl<sup>-</sup> cotransporter and CFTR anion channel in juvenile anadromous and landlocked Atlantic salmon *Salmo salar*. *Journal of Experimental Biology*, 210(16), 2885–2896. <https://doi.org/10.1242/jeb.002873>
- Northcote, T. G., & Ward, F. J. (1985). Lake resident and migratory smelt, *Retropinna retropinna* (Richardson), of the lower Waikato River system, New Zealand. *Journal of Fish Biology*, 27(2), 113–129. <https://doi.org/10.1111/j.1095-8649.1985.tb04014.x>
- O'Gorman, E. J., Fitch, J. E., & Crowe, T. P. (2012). Multiple anthropogenic stressors and the structural properties of food webs. *Ecology*, 93(3), 441–448. <https://doi.org/10.1890/11-0982.1>
- O'Gorman, E. J., Ólafsson, Ó. P., Demars, B. O. L., Friberg, N., Guðbergsson, G., Hannesdóttir, E. R., ... Gíslason, G. M. (2016). Temperature effects on fish production across a natural thermal gradient. *Global Change Biology*, 22(9), 3206–3220. <https://doi.org/10.1111/gcb.13233>
- O'Neal, S. L., & Stanford, J. A. (2011). Partial migration in a robust brown trout population of a Patagonian river. *Transactions of the American Fisheries Society*, 140(3), 623–635. <https://doi.org/10.1080/00028487.2011.585577>
- Ojanguren, A. F., Reyes-Gavilán, F. G., & Braña, F. (2001). Thermal sensitivity of growth, food intake and activity of juvenile brown trout. *Journal of Thermal Biology*, 26(3), 165–170. [https://doi.org/10.1016/S0306-4565\(00\)00038-3](https://doi.org/10.1016/S0306-4565(00)00038-3)
- Olsson, I. C., Greenberg, L. A., Bergman, E., & Wysujack, K. (2006). Environmentally induced migration: The importance of food. *Ecology Letters*, 9(6), 645–651. <https://doi.org/10.1111/j.1461-0248.2006.00909.x>
- Ormerod, S. J., Dobson, M., Hildrew, A. G., & Townsend, C. R. (2010). Multiple stressors in freshwater ecosystems. *Freshwater Biology*, 55, 1–4. <https://doi.org/10.1111/j.1365-2427.2009.02395.x>



- Paine, R. T., Tegner, M. J., & Johnson, E. A. (1998). Compounded perturbations yield ecological surprises. *Ecosystems*, 1(6), 535–545. <https://doi.org/10.1007/s100219900049>
- Parmesan, C. (2006). Ecological and evolutionary responses to recent climate change. *Annual Review of Ecology, Evolution, and Systematics*, 37(1), 637–669. <https://doi.org/10.1146/annurev.ecolsys.37.091305.110100>
- Petchey, O. L., McPhearson, P. T., Casey, T. M., & Morin, P. J. (1999). Environmental warming alters food-web structure and ecosystem function. *Nature*, 402(6757), 69. <https://doi.org/10.1038/47023>
- Piche, J., Hutchings, J. A., & Blanchard, W. (2008). Genetic variation in threshold reaction norms for alternative reproductive tactics in male Atlantic salmon, *Salmo salar*. *Proceedings of the Royal Society B-Biological Sciences*, 275(1642), 1571–1575. <https://doi.org/10.1098/rspb.2008.0251>
- Pickering, A. D. (1989). Environmental stress and the survival of brown trout, *Salmo trutta*. *Freshwater Biology*, 21(1), 47–55. <https://doi.org/10.1111/j.1365-2427.1989.tb01347.x>
- Pinheiro, J., Bates, D., DebRoy, S., Sarkar, D., & R Core Team. (2019). nlme: Linear and nonlinear mixed effects models. R package version 3.1-139: Retrieved from <https://CRAN.R-project.org/package=nlme>
- Przeslawski, R., Byrne, M., & Mellin, C. (2015). A review and meta-analysis of the effects of multiple abiotic stressors on marine embryos and larvae. *Global Change Biology*, 21(6), 2122–2140. <https://doi.org/10.1111/gcb.12833>
- Pulido, F. (2011). Evolutionary genetics of partial migration – The threshold model of migration revisited. *Oikos*, 120(12), 1776–1783. <https://doi.org/10.1111/j.1600-0706.2011.19844.x>
- Pulido, F., Berthold, P., & van Noordwijk, A. J. (1996). Frequency of migrants and migratory activity are genetically correlated in a bird population: Evolutionary implications. *Proceedings of the National Academy of Sciences of the United States of America*, 93(25), 14642–14647. <https://doi.org/10.1073/pnas.93.25.14642>
- R Core Team. (2019). *R: A language and environment for statistical computing*. Vienna, Austria: R Foundation for Statistical Computing. Retrieved from <https://www.R-project.org/>
- Railsback, S. F., & Rose, K. A. (1999). Bioenergetics modelling of stream trout growth: Temperature and food consumption effects. *Transactions of the American Fisheries Society*, 128(2), 241–256. [https://doi.org/10.1577/1548-8659\(1999\)128<0241:BMOSTG>2.0.CO;2](https://doi.org/10.1577/1548-8659(1999)128<0241:BMOSTG>2.0.CO;2)
- Rall, B. C., Vucic-Pestic, O., Ehnes, R. B., Emmerson, M., & Brose, U. (2010). Temperature, predator–prey interaction strength and population stability. *Global Change Biology*, 16(8), 2145–2157. <https://doi.org/10.1111/j.1365-2486.2009.02124.x>
- Riddell, B. E., & Leggett, W. C. (1981). Evidence of an adaptive basis for geographic variation in body morphology and time of downstream migration of juvenile Atlantic salmon (*Salmo salar*). *Canadian Journal of Fisheries and Aquatic Sciences*, 38(3), 308–320. <https://doi.org/10.1139/f81-042>
- Rowe, D. K., Thorpe, J. E., & Shanks, A. M. (1991). Role of fat stores in the maturation of male Atlantic salmon (*Salmo salar*) parr. *Canadian Journal of Fisheries and Aquatic Sciences*, 48(3), 405–413. <https://doi.org/10.1139/f91-052>
- Sanderson, E. W., Jaiteh, M., Levy, M. A., Redford, K. H., Wannebo, A. V., & Woolmer, G. (2002). The human footprint and the last of the wild: The human footprint is a global map of human influence on the land surface, which suggests that human beings are stewards of nature, whether we like it or not. *BioScience*, 52(10), 891–904. [https://doi.org/10.1641/0006-3568\(2002\)052\[0891:THFATL\]2.0.CO;2](https://doi.org/10.1641/0006-3568(2002)052[0891:THFATL]2.0.CO;2)
- Schindler, D. E., Armstrong, J. B., & Reed, T. E. (2015). The portfolio concept in ecology and evolution. *Frontiers in Ecology and the Environment*, 13(5), 257–263. <https://doi.org/10.1890/140275>
- Schultz, E. T., & McCormick, S. D. (2012). 10 - Euryhalinity in an evolutionary context. In S. D. McCormick, A. P. Farrell, & C. J. Brauner (Eds.), *Fish physiology* (Vol. 32, pp. 477–533). Cambridge, MA: Academic Press. <https://doi.org/10.1016/B978-0-12-396951-4.00010-4>
- Sigholt, T., & Finstad, B. (1990). Effect of low temperature on seawater tolerance in Atlantic salmon (*Salmo salar*) smolts. *Aquaculture*, 84(2), 167–172. [https://doi.org/10.1016/0044-8486\(90\)90346-O](https://doi.org/10.1016/0044-8486(90)90346-O)
- Sinclair, B. J., Marshall, K. E., Sewell, M. A., Levesque, D. L., Willett, C. S., Slotsbo, S., ... Huey, R. B. (2016). Can we predict ectotherm responses to climate change using thermal performance curves and body temperatures? *Ecology Letters*, 19(11), 1372–1385. <https://doi.org/10.1111/ele.12686>
- Sloat, M. R., & Reeves, G. H. (2014). Individual condition, standard metabolic rate, and rearing temperature influence steelhead and rainbow trout (*Oncorhynchus mykiss*) life histories. *Canadian Journal of Fisheries and Aquatic Sciences*, 71(4), 491–501. <https://doi.org/10.1139/cjfas-2013-0366>
- Swingland, I. R., & Greenwood, P. J. (1984). *Ecology of animal movement*. Oxford, UK: Clarendon Press. Retrieved from <http://agris.fao.org/agris-search/search.do?recordID=US201300350290>
- Tanguy, J. M., Ombredane, D., Baglinière, J. L., & Prunet, P. (1994). Aspects of parr-smolt transformation in anadromous and resident forms of brown trout (*Salmo trutta*) in comparison with Atlantic salmon (*Salmo salar*). *Aquaculture*, 121(1), 51–63. [https://doi.org/10.1016/0044-8486\(94\)90007-8](https://doi.org/10.1016/0044-8486(94)90007-8)
- Tomkins, J. L., & Hazel, W. (2007). The status of the conditional evolutionarily stable strategy. *Trends in Ecology & Evolution*, 22(10), 522–528. <https://doi.org/10.1016/j.tree.2007.09.002>
- Toussaint, C. A., Médale, F., Davenel, A., Fauconneau, B., Haffray, P., & Akoka, S. (2002). Determination of the lipid content in fish muscle by a self-calibrated NMR relaxometry method: Comparison with classical chemical extraction methods. *Journal of the Science of Food and Agriculture*, 82(2), 173–178. <https://doi.org/10.1002/jsfa.1012>
- Walther, G.-R., Post, E., Convey, P., Menzel, A., Parmesan, C., Beebee, T. J. C., ... Bairlein, F. (2002). Ecological responses to recent climate change. *Nature*, 416(6879), 389–395. <https://doi.org/10.1038/416389a>
- Ward, B. R., & Slaney, P. A. (1988). Life history and smolt-to-adult survival of Keogh River steelhead trout (*Salmo gairdneri*) and the relationship to smolt size. *Canadian Journal of Fisheries and Aquatic Sciences*, 45(7), 1110–1122. <https://doi.org/10.1139/f88-135>
- Woodward, G., Dybbkjær, J. B., Ólafsson, J. S., Gíslason, G. M., Hannesdóttir, E. R., & Friberg, N. (2010). Sentinel systems on the razor's edge: Effects of warming on Arctic geothermal stream ecosystems. *Global Change Biology*, 16(7), 1979–1991. <https://doi.org/10.1111/j.1365-2486.2009.02052.x>
- Wysujack, K., Greenberg, L. A., Bergman, E., & Olsson, I. C. (2009). The role of the environment in partial migration: Food availability affects the adoption of a migratory tactic in brown trout *Salmo trutta*. *Ecology of Freshwater Fish*, 18(1), 52–59. <https://doi.org/10.1111/j.1600-0633.2008.00322.x>

## SUPPORTING INFORMATION

Additional supporting information may be found online in the Supporting Information section.

**How to cite this article:** Archer LC, Hutton SA, Harman L, et al. Food and temperature stressors have opposing effects in determining flexible migration decisions in brown trout (*Salmo trutta*). *Glob Change Biol*. 2020;26:2878–2896. <https://doi.org/10.1111/gcb.14990>